

WEATHER

	Min.	Max.	Precip.
Thursday, Nov. 18	27	47	0.00
Friday, Nov. 19	23	45	0.00
Saturday, Nov. 20	20	39	0.00
Sunday, Nov. 21	20	46	0.00
Monday, Nov. 22	21	32	0.02
Tuesday, Nov. 23	23	39	0.02

The Chelsea Standard

QUOTE

"The world would be happier if men had the same capacity to be silent that they have to speak."
—Baruch Spinoza.

ONE HUNDRED-SEVENTH YEAR—No. 24

12 Pages This Week

CHELSEA, MICHIGAN, THURSDAY, NOVEMBER 25, 1976

15c per copy

SUBSCRIPTION: \$6.00 PER YEAR

JV Cagers Sharp in Practice

Chelsea's junior varsity basketball team performed well last Friday in the pre-season scrimmage against Grass Lake and Hudson. The Bulldogs won 9 of 11 quarters they played. Good shooting and strong rebounding were the keys to the good showing.

The Bulldogs will continue to work hard this week in preparation for the opening game this Saturday against the Mounties of Jackson Northwest. Game time is 7:30 on the Bulldogs' home court. Fourteen sophomores and one freshman compose this year's JV team. The team will be trying to improve last year's 4-8 freshmen record. Sophomores include guards Matt Feeney, Gary Dils, Mike Lisele, Ben Kincer, Tim Manley, and Dennis Thompson; forwards Jesse Coburn, Tom Severn, Mike Tachsky, Charlie Bridges, Scott Rice and Kris Steinaway; centers Jim Brown and Al Augustine. The one freshman who has earned position on the JV squad is 6 ft. 10 in. center Don Schrotenboer.

Cub Scouts Will Start Sale of Christmas Trees

Chelsea Cub Scout Packs 415, 435, 445, and 455 will again conduct their annual sale of Christmas trees, beginning Wednesday, Dec. 1, in the parking lot of Leabon's TV on S. Main St.

The scouts will staff their sale of Scotch pines and long-needed spruce Monday through Friday from 5 to 9 p.m., Saturdays from 1 to 5 p.m., and Sundays from 1 to 5 p.m. The sale will continue through Dec. 24, or until all trees are sold.

The annual sale of fragrant Christmas evergreen trees is the sole fund raising effort of local Cub Scouts.

Booster Club To Elect Officers

Chelsea Athletic Booster Club, Inc., has slated a meeting directly after the Fall Sports Banquet on Monday, Nov. 29, for the purpose of nominating and electing officers. The meeting will convene at approximately 9 p.m. in the CHS cafeteria.

All interested persons are urged to attend.

Final Swine Flu Clinic Set Saturday

A reported 220 residents participated in Chelsea's second free bivalent swine-flu immunization clinic at Chelsea Medical Center last Saturday, Nov. 20, as the inoculation program in Washtenaw county drew to a close.

Among the last-minute participants, those under the age of 25 who appeared to receive the milder combination A-Victoria and A-New Jersey vaccine strain, were instead given the monovalent vaccine for greater protection, clinic administrators stated. A limited number of monovalent doses, or swine-flu only, remained available following Chelsea's Nov. 5 monovalent clinic.

To qualify for the \$135 million, government sponsored immunization program, participants were required to sign a release form stating they were neither allergic to eggs, nor suffering from a fever. Health department officials administered more than 2,000 swine-flu vaccines locally with no reported complications or unusual reactions.

Although swine-flu clinics have officially ended in Washtenaw county, several make-up clinics have been scheduled by county health officials. In Chelsea, a final bivalent clinic will be conducted at Chelsea Medical Center on Saturday, Nov. 27, 9 a.m. to 1 p.m.

Large orange signs, emblazoned with a pair of dice and the slogan, "You Can't Afford To Gamble", will direct arriving clinic participants to the immunization site on Saturday.

Hockey Team Slugs Out Tie at Jackson

In a free-swinging, penalty filled hockey game Sunday, Nov. 21, Chelsea scored late in the third period to salvage a 2-2 tie with Jackson Western.

Steve Check collected both goals for Chelsea with assists from Harold Vandervoort and Bob Fisher. According to one observer, "the Jackson officials, as they have in the past, let the game get out of hand, and several fights broke out. It was a typical Jackson refereed game," he noted.

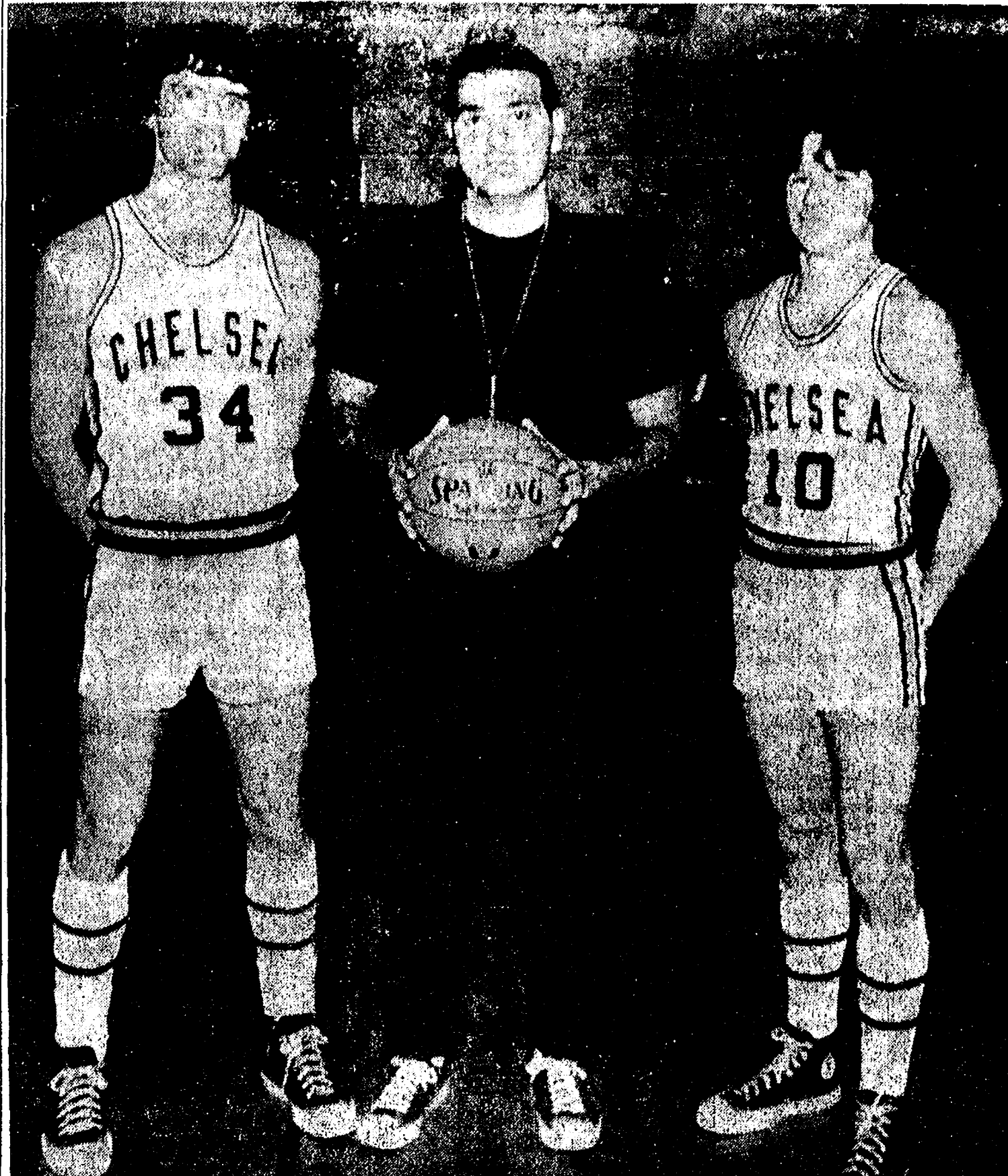
Both Chelsea and Jackson suffered 10 penalties each. As a result, many times the competing iceers observed the game from the sidelines rather than from inside the action-packed rink.

Chelsea will play Tecumseh Sunday, Nov. 28, at 4:30 p.m.

Aquatic Club Gets Off to Fast Start

Chelsea Aquatic Club hosted a Michigan Ten-Swim League double-dual meet with Milan and Dewitt last Saturday. The splashers lost to Milan, 234-213, but beat Dewitt 284-150. Barring a few untimely disqualifications by the young Bulldogs, they might have defeated the much more experienced Big Reds.

The CAC did come up with many swimmers who were able to finish first. They included Jennifer Catell, Melody Gunn, Any Oxner, Paula Colombo, Susie Gunn, Tanya Matloff, Eric Schaffner, Richard Slater, Mardy and David Steinhauer, Kevin Colombo, John Robbins, Dave Nicola, Dave Mason, Sean Oxner, Kirk Hawks, Amy Hume, Kristin Thomas, Dawn McDowell, Jennifer Claxson, Anne Elsele, Cinda Thornton, Kathy Brown, Nancy Heller, Sara Bord-ers, Amette Kuhl, Mardy Stirling. (Continued on page six)



BASKETBALL LEADERS: This three-man wedge is at the front of Chelsea High's 1976-77 varsity basketball team, providing leadership and formulating the Bulldog cagers' upcoming strategy on the courts. From left are co-captain Don Morrison, head coach Tom Balistrere, and co-captain Pete Feeney. The team is slated to begin the season Saturday, Nov. 27, 8 p.m. in the CHS gymnasium. Coach Balistrere is predicting "a very good year."

Basketball Season Opens Saturday Night

Chelsea High school varsity basketball team opens its schedule with a home game on Saturday, against Jackson Northwest.

The team sports the experience of eight returning lettermen, along with players coming to varsity after a strong JV year.

Co-captains for this year's Bulldogs are Don Morrison and Pete Feeney.

In profiling his team, Coach Tom Balistrere offered the following observations: Morrison, a forward, is a good shooter and noted hustler. Feeney, guard, is also noted for his hustle and is the team's floor leader. Other returning seniors are Anthony Houle, a quick sure shooting guard; Tony Robards, last year All-Conference honorable mention and strong rebounding forward; powerful rebounder, postman Randy Sweeney, also a strong inside shooter; and guard Jeff Sweet, who is noted for his speed and aggressiveness. Another returning guard is Dean Thompson, who has a fine jump shot and is a good ball handler.

The last returning letterman is Junior Gerald Benjamin. Benjamin, a forward, is a strong defensive

player and is strong around the basket.

Senior newcomer Gerry Likavec will be playing forward and post man and is quickly becoming familiar with the system here.

The remainder of the squad is coming up from last year's JV team. The squad is looking for a lot of additional help from these juniors. They include guards Marc Feeney and Randy Harris, who can look forward to a lot of playing time; forwards Rod Sweeney and Chris Smyth, both good leapers and rebounders; and post man David Schrotenboer, who can also look forward to helping this year's team.

After the Bulldogs' home court opener against Jackson NW Saturday, Nov. 27, they will play four away games. Their first league game is Dec. 10 at Novi.

Coach Balistrere stated he is pleased with the progress of the club thus far, particularly in recent scrimmage games against Grass Lake and Hudson, and indicated that if teamwork, hustle, and enthusiasm are indicative of a good year, then the Bulldog cagers are apt to make a good showing. (Continued on page six)

New Fire Truck Seen at Open House

Scores of visitors appeared to view Chelsea's newly arrived \$56,000 fire truck during an open house held at the Chelsea Fire Station Sunday afternoon, Nov. 14. With delivery of the new red and white truck on Wednesday, Nov. 10, Chelsea now has a fleet of eight fire engines in operation.

Built by American Fire Apparatus of Battle Creek, the new truck is anchored to a 1975 Ford chassis purchased locally from Palmer Ford. The vehicle has a 2,000-gallon capacity water tank, and can pump water at a rate of 1,000 gallons per minute.

According to Fire Chief Jim Gaken, in recent months, cost of an identical truck has escalated \$13,800.

Before accepting delivery, Chelsea's fire department was required to submit the new vehicle to a five-hour test by insurance underwriters to make sure all fire-fighting apparatus was functioning properly.

The truck was purchased with money collected in a fire truck fund supported by Sylvan, Lima, Lyndon, Sharon, Freedom, Dexter, and Waterloo townships, who all contract with the Chelsea Fire Department for fire protection services. The village of Chelsea is also a contributor.

Among the general public in attendance at Sunday's open house were members of area township boards and supervisors.

Santa Claus Plans Saturday Visit Here

"You better not shout, you better not cry, you better not pout, I'm telling you why, Santa Claus is coming to town."

Echoing the old refrain, Santa Claus will make his annual journey from the North Pole to the Longworth Plating building Dec. 4, 11, and 18, where he will greet parents and children from 1 to 3 p.m.

Along with traditional treats for youngsters, the jolly old fellow will

also be periodically giving away gift certificates from Chelsea merchants to area adults.

During evening hours throughout the week of Dec. 13, local stores will join the festive holiday spirit as they once again conduct their annual mystery shopper contest. Santa's arrival and special in-store celebrations are sponsored by members of Chelsea Merchants Association.

Rev. Grabowski Honored Sunday on 80th Birthday

The Rev. Paul H. Grabowski, pastor emeritus, of St. Paul United Church of Christ was honored on the occasion of his 80th birthday on Sunday, by members and friends of St. Paul congregation. A surprise dinner fellowship time was held following the morning worship service and under the sponsorship of the Spiritual Life Department of the church.

Pastor Grabowski served as pas-

tor for St. Paul church for 33 years, retiring in 1959 when he was named pastor emeritus. Though he presently resides in Ann Arbor he regularly attends worship services and participates in the program of St. Paul church.

A letter of greeting was read from the Rev. John Rogers, the Michigan Conference minister of the United Church of Christ, by

(Continued on page six)

Dexter Township Delays Road Ordinance Action

Dexter Township Board held a special meeting Nov. 16 to consider the adoption of a private road ordinance. It is an ordinance intended to protect the public safety by preventing the establishment of private roads, which cannot adequately handle fire and other emergency services.

The road ordinance would also require sufficient right-of-way to allow upgrading of the road as use increases.

At the first reading of the ordinance the board found several areas which needed re-wording, and therefore decided to delay action until the regular December meeting to be held Dec. 6.

The only action taken by the board was authorization of a study of sign needs of the township and recommendations of a sign prototype and a signage program for Dexter township.

Girls Swim Team Second in Milan's Invitational Meet

Chelsea High's girls varsity swimming team ended their regular swimming season Thursday night, Nov. 18, in Milan with the female swimmers finishing second in Milan's state champions in the third annual Milan Swimming Invitational. For their efforts, the women were rewarded with the runners-up trophy. Final tally was Milan, 433; Chelsea, 271; Dundee, 179; Erie-Mason, 163; and Willow Run, 120.

"Chelsea went into this meet knowing that they would have to perform better than they ever had to finish second ahead of Dundee and Erie-Mason, who have each had swimming programs for more than 10 years," said Coach Larry Reed. "The Bulldog performers swam tremendously with each performer having at least one lifetime best."

Leading the way for Chelsea were Shelly Springer with two firsts in the 50-free and 100-fly, and a fourth in the medley relay; Shannon Springer with two seconds and a third; and Sheila Tarasow, two seconds and a third.

In the medley relay, Chelsea placed both its "A" and "B" relay squads ahead of several other teams. On the Bulldog relay squads were Michelle Kamyssek, Karen Dresch, Shelly Springer, Kim Slater, Mary Stoll, Sue Inglis, Meg Pennington, and Jan O'Berg.

In diving the highlight was Dresch's 6th place finish which qualified her for the state meet, Cathy Voita was 7th, and Sandy Shadoan 8th.

In individual swimming events, placing for Chelsea were Shannon Springer, 2nd, 200-free; Anne Schaible, 6th, 200-free; Kim Wood, 7th, 200-free; Patti Hume, 7th, 200-individual; Tarasow, 3rd, 50-free; and Kamyssek, 11th, 50-free.

In the grueling Butterfly race Chelsea was led once again by Shelly Springer who was first in a State Meet qualifying time, Pennington moved up to fifth and Stoll 7th. In the 100-free Chelsea placed four swimmers with Tarasow finishing 2nd, Hume 4th, Wood 11th, and Beverly Simon 12th.

In the meet's longest race, the 500-free, Shannon Springer finished third, Schaible 7th, and Linda Hamilton 11th. In the backstroke, Chelsea was paced by co-captain Stoll's 6th place finish and Linda Vandervoort's 9th.

In the breaststroke the Bulldogs placed three of their four swimmers with Dresch finishing 10th, Inglis 11th, and Kathy Slater 12th.

The girls finished their season with five wins and four losses. The encouraging fact is that they lost their first four meets in a row and finished the season with five straight dual meet victories.

The following girls are also qualified for the state meet in Kalamazoo, on Dec. 3 and 4: Kamyssek, Dresch, Shelly Springer, Tarasow, Voita, Hume, Shannon Springer, Kim Slater, O'Berg, Stoll and Inglis.

Robert Siegel Arraigned on Kidnap Charge

Robert P. Siegel was arraigned in 14th District Court Monday, Nov. 22, on charges of kidnapping following the forcible abduction of his son, David, from South school playground last July. After nearly two hours of testimony, court was recessed with the pre-trial hearing scheduled to resume Nov. 24.

Called to the witness stand by prosecutor Virginia Morgan were representatives from Washtenaw County Social Services, and Friend of the Court, David's foster mother, and a witness to the alleged kidnapping.

David has lived with foster parents in the Chelsea area since December, 1974, following a ruling by Washtenaw County Circuit Court Judge William F. Ager that neither of his parents were "capable" of caring for him.

David's three-month disappearance ended Sept. 16 with the arrest of the elder Siegel in Caldwell, Kans. According to Ann Arbor FBI agent James Riley, the arrest was made following an alert to authorities on the boy's whereabouts from South school principal Sylvester Wojcicki. Wojcicki had been contacted by school officials in Caldwell, where David was enrolled in the fall semester, when Siegel had failed to produce David's past school records.

Three-Car Crash Injures 8 Seriously

Poor weather conditions were reportedly the cause of a three-car collision on I-94 near Dancer Rd. Sunday evening, Nov. 21 which hospitalized two drivers and six passengers with severe injuries.

According to Washtenaw County Sheriff's Department reports, a vehicle driven by Donald Campe of Clarkston was eastbound on I-94 about 8:10 p.m. when it apparently slid on an icy patch during blizzard-like conditions. Campe lost control of the car which careened across the highway median, and struck a vehicle driven by Gladys Boone of New Haven, Ind.

The Boone auto spun sideways, and was hit broadside by a car driven by Tana Reynolds of Albion, which had been following behind, westbound on I-94.

No injuries were suffered by occupants of the Boone vehicle, but Campe, Reynolds, and six passengers in the Reynolds car were transported to St. Joseph Mercy Hospital, Ann Arbor, and University Hospital, Ann Arbor, where their condition was reported serious. Major injuries were sustained by Mrs. Marilyn Campe, a passenger in the Campe vehicle. She was also admitted to the hospital emergency room for treatment.

Fall Athletic Banquet Set For Monday

Chelsea High's Fall Athletic Banquet will be held Monday, Nov. 29, 6:30 p.m. in the high school cafeteria for all 1976-77 participants in golf, cross-country, football, girls basketball, cheerleading, and swimming.

According to CHS Athletic Director Tom Balistrere, parents and friends are welcome, although invitations were not sent out this year because of a reduction in funds following Chelsea's Oct. 19 millage defeat.

Parents are asked to bring two dishes, one hot and one cold. Immediately following the dinner, award presentations will be made to athletes, including letters and a certificate to each team member.

All football squads and cheerleaders are asked to meet in the CHS auditorium, and members of the golf, cross-country, girls basketball, and swimming teams will meet in the cafeteria.



CENTENNIAL FARM: Mrs. Ella Klein Gross (left), her granddaughter Margery Parsons (center), and her daughter, Mrs. Ray Parsons (right), display a metal marker commemorating 100 years of ownership of a Michigan farm by the same family. Originally 120 acres, Mrs. Gross' 83-acre farm

Ella Gross Lima Township Home Designated Centennial Farm

A farm owned by Ella Klein Gross of 620 N. Lima Center Rd., has been designated as a Centennial Farm by the Division of Michigan History, department of state officials announced recently.

The farm, located in Lima township, has been in the possession of the family since 1869. It was originally purchased Aug. 1, 1869, by Jacob Klein, grandfather of the present owner, in partnership with Nicholas Bale. Following his marriage, Klein purchased Bale's share in 1863. Originally from Germany, Klein immigrated to the United States in 1860. After arriving in Chelsea area, he bought the

was purchased by her grandfather, Jacob Klein, in 1859. Margery represents the fifth generation of the same family to reside on the farm. The land was designated as a Centennial Farm by the Division of Michigan History early this fall.

ing wheat, corn, oats and hay. Before he could begin, Klein and his partner, Bale, found it necessary to clear brush out of the fields and construct a barn. While building the barn, the two men erected a small house on a hill overlooking the property. The cabin-like structure continued to serve as a residence until 1872, when Klein built the original farmhouse. Current out-buildings still preserve Klein's original handiwork. These include heavy oak beams in the straight-roofed barn, and huge timbers which support a corn crib.

Over the years, in addition to remodeling the original farm-

house, Mrs. Gross and her family added a tool shed and garage to the farm. They also sold several acres of property to Detroit Edison for the construction of power lines and laying of underground cables. Presently the farm comprises only 93 acres, part of which is rented by Charles Trinkle for farming purposes.

Mrs. Gross continues to live on her grandfather's farm along with her son-in-law and daughter, Mr. and Mrs. Ray Parsons, and the couple's daughter, Margery. Margery represents the fifth generation of the same family to occupy the premises. (Continued on page six)

Established 1871 **The Chelsea Standard** Telephone 475-1371Excellence Award By Michigan Press Association
1951-1952-1960-1964-1965-1966

Walter P. Leonard, Editor and Publisher



Published every Thursday morning at 300 North Main Street, Chelsea, Mich. 48118, and second class postage paid at Chelsea, Mich., under the Act of March 3, 1879.

Subscription Rates (Payable in Advance)

In Michigan:		Outside Michigan:	
One Year	\$8.00	One Year	\$8.50
Six Months	\$4.50	Six Months	\$4.50
Single Copies	\$.20	Single Copies	\$.25

MEMBER
NATIONAL NEWSPAPER
Association - Founded 1885

National Advertising Representative:
MICHIGAN NEWSPAPERS, INC.
257 Michigan Ave.
East Lansing, Mich. 48823

JUST REMINISCING

Items Taken from the files of The Chelsea Standard

4 Years Ago...

Thursday, Nov. 30, 1972—

Col. Harold Crowell, an officer in the Salvation Army and a member of the Ann Arbor Kiwanis Club, came to the Monday night Chelsea Kiwanis Club gathering to speak on the history and activities of his army.

Of the 93 CHS students taking the Michigan Mathematics Prize Competition, only Carol Fairbrother, David Klemer, and Bill Schaefer qualified to take the second part of the competitive exam.

Frisinger Realtors has added two new members to its staff. Toby Peterson will be located at the Ann Arbor office, and Mary Ann Staehler has joined the Chelsea branch on Main St.

Recreation director Ken Larson hopes to begin a men's basketball league in Chelsea. At least six teams are needed to start a league which would begin competition in January.

14 Years Ago...

Thursday, Nov. 29, 1962—

Ben R. Donaldson of Cavanaugh Lake was an official delegate to the third biennial convention of the American Association for the United Nations held in the Hotel Roosevelt, N.Y.C., from Nov. 16-18.

After 42 years, highway M-92 will no longer be on state highway maps. Michigan State Highway Department officials said that a 40-mile section of M-92 in Lenawee, Washtenaw, Jackson, and Ingham counties has been redesignated M-52 to provide continuity in the highway numbering system.

Larry Chapman and Thomas McClellan, co-chairmen of Chelsea's Community Chest campaign added up the late returns since the drive's official closing and announced there is a possibility the \$15,400 goal may yet be made.

At the second meeting of the newly-reactivated St. Mary's School Association held Nov. 20, Jack Merkel was elected president for the 1962-63 school year.

Eighteen Chelsea High school Future Farmers of America, with their advisor, Stephen Hayden, and David Wolfgang as assisting adult chaperon, left for a two-day visit to the International Livestock Show, Chicago, and a tour of other Chicago points of interest.

24 Years Ago...

Thursday, Nov. 27, 1952—

The envy of male deer hunters who travel near and far in search of game, is Mrs. Isadore (Grace) Wencel of Island Lake Rd., who needed her husband's assistance in helping her carry an eight-point buck she had shot near her home. Mr. Wencel had just returned home empty-handed from a hunting trip to Grayling.

Because the state has not had the money to advance sufficient state aid funds to schools, the Chelsea Agricultural schools district requested and received permission from the Municipal Finance Commission of the state to borrow \$20,000 for operating expenses until 1952 tax monies begin to come in after the first of the year.

Representatives of the Chrysler Corp., school board members, and a representation of electors of the Red School district met to discuss Chrysler's proposal leading to acquisition of the property on which the schoolhouse is located.

Maxwell Sweet, as program chairman at Monday night's Kiwanis club meeting, introduced two men from the speech department of the University of Michigan. One of them, William P. Baxter of Chelsea, spoke on the topic, "Push Button Factories."

34 Years Ago...

Thursday, Nov. 26, 1942—

There will be a Ration Board set up in Chelsea to act on applications submitted for B and C ration books, Non-Highway Ration, Transport Mileage, Fleet Mileage, Bulk Consumers Gas, etc.

"Sunbonnet Jane of Sycamore Lane" will be staged by the Young People's League of St. Paul's church at the High School Gymnasium next Friday. The play is under the direction of Mrs. Katherine Kusterer, and Kathryn Lindauer plays the lead of Sunbonnet Jane.

People who do not have War Ration Book No. 1 may register for coffee at the high school from 1 p.m. to 3 p.m. on Friday.

The War Production Board has asked city officials, civic clubs, chambers of commerce, merchants, and citizens generally to dispense with outdoor decorative lighting this Christmas.

MICHIGAN MIRROR

By Warren M. Hoyt, Secretary, Michigan Press Association

Of Jobs and Bottles

With the bottle battle over, Michigan prepares to move gradually into its position as the first large industrial state in the country to ban throwaway beverage containers.

And in some quarters, the question of jobs persists. Will the number of jobs increase or decrease as a result of voter approval of the ban?

Before the election, opponents of the ban warned about prospective loss of jobs, quoting a U.S. Department of Commerce estimate that a nationwide switch to all returnable bottles would eliminate 87,000 skilled jobs in metal fabrication and can and bottle manufacturing.

Some backers of the ban, on the other hand, pointed to a 1974 survey by the Public Interest Research Group in Michigan (PIRGIM). (The survey dealt only with returnable beer containers, but PIRGIM said soft drink job displacement would be considered.

ably less than on beer because a larger proportion of soft drink are already sold in returnables.

The survey suggested that two factors would ease the effect of jobs if a bottle-can ban were instituted:

—Over 80 percent of Michigan beer production is sold in other states or already sold in kegs or returnable bottles.

—The state's brewers will have to hire additional employees to handle returnables—thus increasing employment.

The slated implementation date for the bottle ban is still two years away, on Nov. 3, 1978.

Only as that date draws closer will Michigan really know the jobs effect.

But on the positive side is the word from former Gov. Tom McCall of Oregon—a state which instituted a throwaway ban in 1972. "The fact is," McCall says, "that... our ban has substantially reduced litter, cut solid

waste, conserved energy, created jobs and saved consumers money."

Historical Bricks

Three more miles and they're history, those brick-surfaced highways that replaced the dusty "driveways" and plankway of yore.

One of the few remaining sections of brick-surfaced state highway, in Morenci, near the Ohio border in Lenawee county, was paved over, reports the State Department of Highways and Transportation.

Only 3.3 miles of brick surfacing remain on the 9,300-mile state highway system.

Why Bricks? Durable and easily produced from native clay, bricks required no special machinery for paving other than skill and muscle.

The soft reddish tints provided a "pleasing contrast" to Michigan roadside greenery, the highway experts say.

Their explanation continues this way:

"Although bricks were superior to gravel, sand and planks for surfacing roads, the debut of the automobile signaled their doom. Slippery when wet or snow-covered, bricks were easily dislodged by snow plows and automobile and truck traffic, particularly during periods of freezing and thawing."

Specials Offered

Something new for the handicapped is available from the Secretary of State's office this fall—special license plates for family members who use their vehicles to transport other handicapped members of the family—and special plates to owners of pickup trucks weighing less than 5,001 pounds.

These can be obtained, before March 31, 1977, from the Michigan Department of State, Special Registrations Division, Secondary Complex, Lansing 48918.

The special plates, with wheelchair emblems denoting their purpose, can be obtained with the license plate application and a doctor's statement attesting to the handicapped person's disability.

Young People from Church Entertains at Methodist Home

A large number of residents of Chelsea United Methodist Retirement Home gathered Sunday evening, Nov. 14, to be delightfully entertained by a youth group from Dexter United Methodist church. The group was under the leadership of Mrs. Nancy Van Blaricum, with Mrs. Ann Lee at the piano.

Ann Arbor Symphony Concert Slated Sunday

The bicentennial Thanksgiving week-end will be highlighted by the Ann Arbor Symphony Orchestra's second concert of the season, Sunday, Nov. 28, at 3:30 p.m., in Hill Auditorium, Edward Szabo conducting. There is no admission charge.

The concert is sponsored by a grant from Pittsfield Products, Inc., of Ann Arbor, as well as support from the Women's Association of the Ann Arbor Symphony Orchestra, the Michigan Council for the Arts, and the Music Performance Trust Funds of the American Federation of Musicians, and Local 25 of the A.F. of M.

Copland's "A Lincoln Portrait" will be performed with Professor Leslie Guinn of the U-M voice faculty as narrator. The work is particularly appropriate to America's family holiday in an election year as it uses quotations from Lincoln's addresses and letters with an orchestral accompaniment that includes familiar American ballads.

Dvorak's Symphony No. 7 in D Minor, formerly numbered Symphony No. 2, is also on the program. Not as well known as the "New World" Symphony (No. 9), the composition is of a more international flavor than most of the music for which Dvorak is famous.

The orchestra will also perform "Dance of the Rose Maidens," "Lullaby," and the well-known "Sabre Dance" from Khachaturian's "Gayane" suite as well as Debussy's impressionistic "Prelude to the Afternoon of a Fawn."

Professor Guinn, baritone, also is a chamber musician and recording artist of note, and has appeared with leading symphonies throughout the United States and as artist in residence in summer music festivals at Saratoga, Chautauque, Grant Park, Tanglewood, and Marlboro.

Doors at Hill will open at 3 p.m. before the concert which is expected to conclude at 5:15.

CHICKEN is still SPECIAL on TUESDAY NIGHTS

at the

CAPTAINS TABLE

All you can eat of Deep-fried Chicken, French Fries, Biscuits and Honey, plus a trip to our delicious Salad Bar.

\$2.95**The Captains Table**

8093 Main St., Dexter 426-3811

Mon.-Wed. 6 a.m.-9 p.m.
Thurs., Fri., 6 a.m.-10 p.m.
Saturday, 7 a.m.-9 p.m.

**NOW SERVING
EACH SATURDAY EVENING
Spaghetti and Meat Ball Dinners
Includes Salad and Roll**

Police Caution Drivers of Danger In Slippery Roads

With snow and ice in the weather forecast, sheriff's police warn drivers to be very careful on overpasses which tend to be slick with the first snowfalls.

They also remind residents in the village of Chelsea of the village ordinance which prohibits parking on all hard-surfaced roads from 2 a.m. to 6 a.m. every night. The ordinance will be strictly enforced with the autos being towed away at the owner's expense and a fine given the offenders.

Howell**Livestock Auction**

Starts 1 p.m. Every Monday
Mason 676-5400

The Wise Owl Says Ship to Howell
Phone 546-2470. **Jim Franklin**

Market Report for Nov. 22**CATTLE**

Bulk Cd.-Choice Steers, \$38 to \$40.50
New High Choice Steers, \$40.50 to \$41
Cd.-Choice Heifers, \$32 to \$37
Fed Holstein Steers, \$30 to \$34
U-I-Side \$25 and down.

COWS

Heifer Cows, \$25 to \$26
U-Commercial, \$20 to \$24.50
Canter-Cutter, \$14 to \$20
Fed Beef Cows, \$17 to \$21

BULLS

Heavy Bologna, \$26 to \$30
Light and Common, \$25 and down.

FEEDERS

400-800 lb. Good-Choice Steers, \$32 to \$38
600-800 lb. Good-Choice Steers, \$30 to \$35
300-600 lb. Good-Choice Heifers, \$22 to \$28
300-500 lb. Holstein Steers, \$22 to \$28
600-800 lb. Holstein Steers, \$22 to \$26

PIGS

Prime, \$40 to \$50
Good-Choice, \$30 to \$40
Heavy Deacons, \$20 to \$30
Cull & Med., \$10 to \$20
Calves going back to farms sold up to \$35

SHEEP

Shorn Slaughter Lambs:
Choice-Prime, \$30 to \$35
Good-Utility, \$25 to \$30

Woolled Slaughter Lambs, Spring:
Choice-Prime, \$36 to \$39
Good-Utility Heavy, \$30 to \$35
Slaughter Ewes, \$5 to \$12
Feeder Lambs, All Weights, \$40 to \$44

HOGS

200 to 250 lbs., No. 1, \$34 to \$34.90
200-250 lbs., No. 2, \$30 to \$34
Heavy Hogs, 250 lbs. up, \$25 to \$30
Light Hogs, 200 lbs., \$25 to \$30

SOVS

Pancy Light, \$23 to \$23.50
300-500 lb., \$22 to \$23.50
500 lbs. and up, \$23 to \$23.50

BOARS AND STAGS

All Weights, \$18 to \$22

FEEDER PIGS

Per Head, \$10 to \$30
Est. 40 lb. pigs, \$22 to \$24

HAY

1st Cutting, per bale, 60c to \$1.00
2nd Cutting, per bale, \$1 to \$1.40

STRAW

Per Bale, 50c to 75c

COWS

Tested Dairy Cows, \$300 to \$850
Tested Beef Type Cows, \$200 to \$300

Would you like a good variety
of PORK CUTS at our
SUPER SPECIAL PRICE?
PORK SIDES Only 69¢ lb.
(NO WASTE - 80 to 100 Lb. Avg.)

**SPECIAL
BULK HAMBURGER .. lb. 59c**
(In 10 1-Lb. Blocks)

**CUSTOM SLAUGHTERING
and PROCESSING**

**HOME FREEZER MEATS
Wholesale - Retail**

NO WAITING

We Accept Federal Food Stamps

ORDERS READY
TO TAKE HOME

Discount to Civic Groups

PHONE 426-8466

DUNBAR'S**DEXTER
LOCKER**

8085 MAIN ST., DEXTER

PAUL DUNBAR, OWNER

FREE BOOKLET
AVAILABLE
AT ALL
AAFS OFFICES

**\$Strike
it
Rich
With...**

**ANN ARBOR
FEDERAL SAVINGS
AAFS**

ANN ARBOR FEDERAL SAVINGS**AAFS**

11 OFFICES TO SERVE YOU IN: ANN ARBOR, BRIGHTON, CHELSEA, DEXTER, MANCHESTER, SALINE, YPSILANTI

MEMBER FSIC

- How to accumulate \$81,000 with as little as \$50 a month.
- How to take a \$7500 tax break.
- How to double your money.
- There's gold in your checking account.

You want to strike it rich. Good for you! You can with the help of this booklet, and the sound, simple financial principles embodied in it. You can accumulate sums of \$50,000, \$75,000, \$125,000 or more. And you don't have to have a big salary to do it. How much you make is not nearly as important as what you do with it. One 40 year old individual never made over \$9,000 a year, but with the magical effect of compound interest accumulated \$84,000. Without adding another penny this fortune will grow to \$200,000 by age 53 and \$400,000 by age 63. Send for our "Strike it Rich" booklet or pick up one at any of our offices and be on your way to building your fortune. Good for you and it's good for us to be able to provide information that can do so much for you.

☐ Please send me a Strike it Rich Booklet

Name _____

Address _____

City _____ State _____ Zip _____

Telephone _____

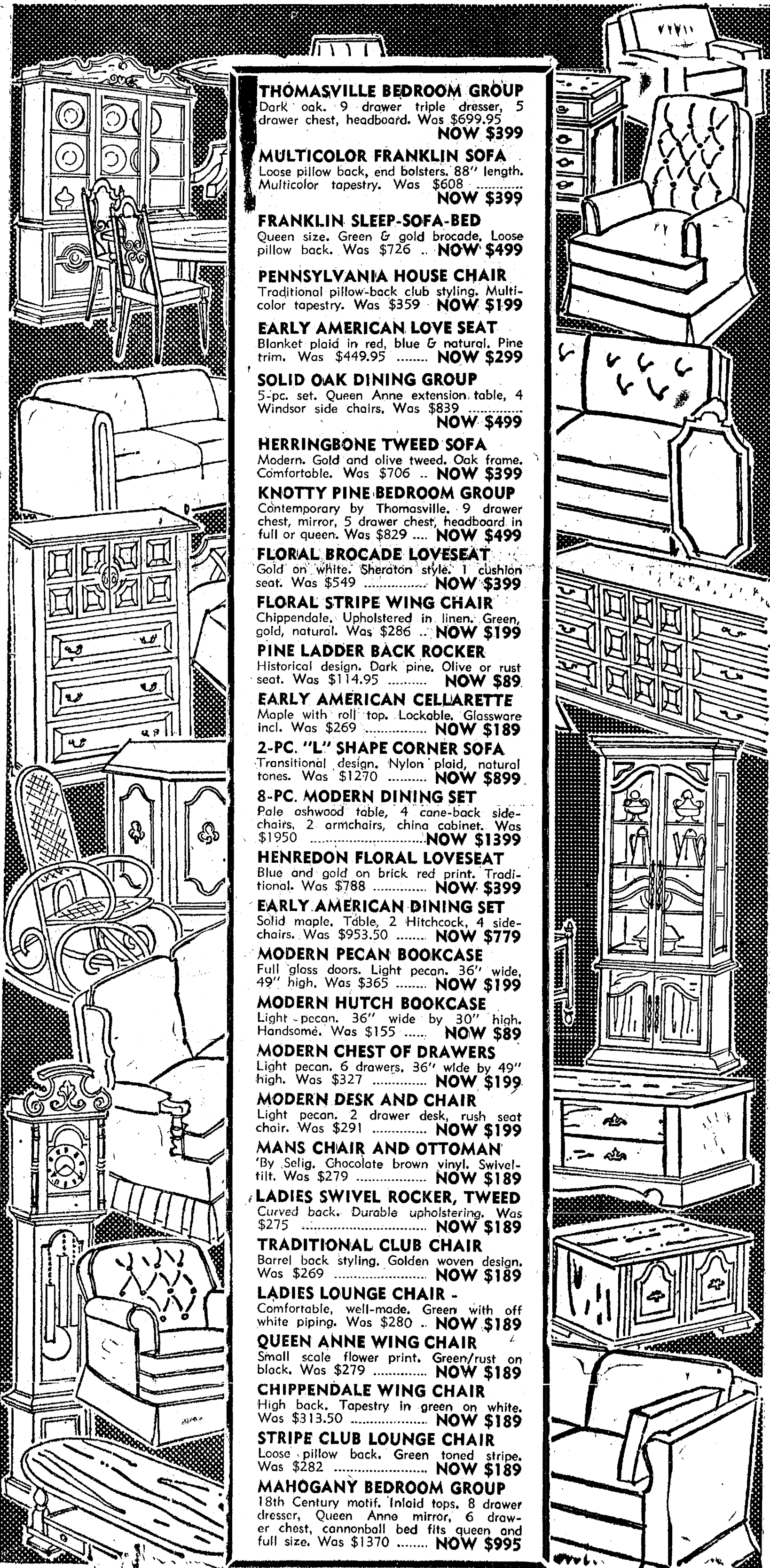
ANN ARBOR FEDERAL SAVINGS

Ann Arbor
Federal Savings
401 E. Liberty
Ann Arbor, Michigan
48106

A PARTIAL LIST OF OVER 50 SPECIALS!

FURNITURE CLEARANCE

**SELIG, HENREDON, THOMASVILLE
FRANKLIN, PENNSYLVANIA HOUSE**



THOMASVILLE BEDROOM GROUP

Dark oak, 9 drawer triple dresser, 5 drawer chest, headboard. Was \$699.95
NOW \$399

MULTICOLOR FRANKLIN SOFA

Loose pillow back, end bolsters, 88" length. Multicolor tapestry. Was \$608
NOW \$399

FRANKLIN SLEEP-SOFA-BED

Queen size. Green & gold brocade. Loose pillow back. Was \$726
NOW \$499

PENNSYLVANIA HOUSE CHAIR

Traditional pillow-back club styling. Multicolor tapestry. Was \$359
NOW \$199

EARLY AMERICAN LOVE SEAT

Blanket plaid in red, blue & natural. Pine trim. Was \$449.95
NOW \$299

SOLID OAK DINING GROUP

5-pc. set. Queen Anne extension table, 4 Windsor side chairs. Was \$839
NOW \$499

HERRINGBONE TWEED SOFA

Modern. Gold and olive tweed. Oak frame. Comfortable. Was \$706
NOW \$399

KNOTTY PINE BEDROOM GROUP

Contemporary by Thomasville. 9 drawer chest, mirror, 5 drawer chest, headboard in full or queen. Was \$829
NOW \$499

FLORAL BROCADE LOVESEAT

Gold on white. Sheraton style. 1 cushion seat. Was \$549
NOW \$399

FLORAL STRIPE WING CHAIR

Chippendale. Upholstered in linen. Green, gold, natural. Was \$286
NOW \$199

PINE LADDER BACK ROCKER

Historical design. Dark pine. Olive or rust seat. Was \$114.95
NOW \$89

EARLY AMERICAN CELLARETTE

Maple with roll top. Lockable. Glassware incl. Was \$269
NOW \$189

2-PC. "L" SHAPE CORNER SOFA

Transitional design. Nylon plaid, natural tones. Was \$1270
NOW \$899

8-PC. MODERN DINING SET

Pale ashwood table, 4 cane-back side chairs, 2 armchairs, china cabinet. Was \$1950
NOW \$1399

HENREDON FLORAL LOVESEAT

Blue and gold on brick red print. Traditional. Was \$788
NOW \$399

EARLY AMERICAN DINING SET

Solid maple. Table, 2 Hitchcock, 4 side chairs. Was \$953.50
NOW \$779

MODERN PECAN BOOKCASE

Full glass doors. Light pecan, 36" wide, 49" high. Was \$365
NOW \$199

MODERN HUTCH BOOKCASE

Light pecan, 36" wide by 30" high. Handsome. Was \$155
NOW \$89

MODERN CHEST OF DRAWERS

Light pecan, 6 drawers, 36" wide by 49" high. Was \$327
NOW \$199

MODERN DESK AND CHAIR

Light pecan, 2 drawer desk, rush seat chair. Was \$291
NOW \$199

MAIS CHAIR AND OTTOMAN

'By Selig. Chocolate brown vinyl. Swivel-tilt. Was \$279
NOW \$189

LADIES SWIVEL ROCKER, TWEED

Curved back. Durable upholstery. Was \$275
NOW \$189

TRADITIONAL CLUB CHAIR

Barrel back styling. Golden woven design. Was \$269
NOW \$189

LADIES LOUNGE CHAIR

Comfortable, well-made. Green with off white piping. Was \$280
NOW \$189

QUEEN ANNE WING CHAIR

Small scale flower print. Green/rust on black. Was \$279
NOW \$189

CHIPPENDALE WING CHAIR

High back. Tapestry in green on white. Was \$313.50
NOW \$189

STRIPE CLUB LOUNGE CHAIR

Loose pillow back. Green toned stripe. Was \$282
NOW \$189

MAHOGANY BEDROOM GROUP

18th Century motif. Inlaid tops. 8 drawer dresser, Queen Anne mirror, 6 drawer chest, cannonball bed fits queen and full size. Was \$1370
NOW \$995



Mr. and Mrs. William Dittmar

Observe 40th Anniversary

Mr. and Mrs. William Dittmar, formerly of Wayne and currently residents of Cavanaugh Lake, celebrated their 40th wedding anniversary this past October with a family dinner at Win Schuler's in Jackson. They were married July 25, 1936.

Attending the anniversary celebration were immediate family members, including Mr. and Mrs. John Carpenter, Mr. and Mrs. James Dittmar and family, Mrs. Janet Spencer and family, Joan Dittmar, Mr. and Mrs. Larry Fildh and family, Mr. and Mrs.

Phillip LaJoy and family, and Mr. and Mrs. James Spencer. The Dittmars and their son, James, are present owners of Cavanaugh Lake Store.

In honor of the occasion, Mr. and Mrs. Dittmar's daughter, Joan, decorated an anniversary cake, and family members presented the couple with a monetary gift towards their upcoming trip to Alaska.

To commemorate the event, a poem was written by John Carpenter, step-father of Mrs. Dittmar.

Bell-Norton Vows Exchanged In Ceremony at Saline Church

Lena Marlane Bell, daughter of Mr. and Mrs. Wilbur Bell of Saline, exchanged marriage vows with Steven Glenn Norton, son of Mr. and Mrs. Ernest Norton, also of Saline and formerly of Chelsea, Nov. 8, 1 p.m., in First Baptist church of Saline. The ceremony was performed by the Rev. Robert Harvey.

Church organist, Mrs. Johnson, played several selections for the couple during the wedding service, including a special song, "The Sweetest Story Ever Told."

As she approached the altar, the bride was wearing a satin gown with a velvet bodice, trimmed in lace and pink rosettes. Her floor-length veil was held in place by a velvet bow headpiece. The bride's costume had been made for her by her aunt, Mrs. Geraldine Rushing of Ann Arbor. A bouquet of blue carnations, blue straw flowers, and dried foliage completed her attire.

Mrs. Jacquelyn Gross of Saline was matron of honor. She appeared in a blue gown with a royal blue velvet bolero and a royal blue velvet headpiece. Mrs. Gross carried a bouquet of blue carnations and straw flowers.

Bridesmaids for the occasion were Mrs. Sharon Talbot of Milan, the bridegroom's sister, and Laura Drake of Ann Arbor. They wore pink gowns with burgundy boleros and burgundy bow headpieces. They held bouquets of pink carnations and burgundy straw flowers.

For her daughter's wedding, Mrs. Bell wore a long pink crepe dress, while the bridegroom's mother, Mrs. Norton, was attired in a long, light-blue chiffon dress with a brown flower print overlay.

Other attendants included Trina Lynn Bell, the bride's niece, who was flower girl, and Eric Zink of Chelsea, who was ring bearer. Daniel Allen Talbot of Milan, the bridegroom's brother-in-law, served as best man. Groomsman were Roger Williamson of Saline,

and Barry Bennett of Ypsilanti. Assisting as ushers were Michael Trombley of Ann Arbor, and William Bell of Willis, brother of the bride.

Following the marriage ceremony, a reception was held at the home of the bride's parents where a buffet dinner was served to guests. The dinner was prepared by the bride's mother, Mrs. Bell; the bride's grandmother, Mrs. Rhoda Clickner of Ann Arbor; the bride's aunt, Mrs. Geraldine Rushing of Ann Arbor; and the bride's two cousins, Mrs. Dixie Briegel of Detroit, and Mrs. Joanne Baker of Ann Arbor.

Mrs. Ina Briegel of Ann Arbor, great-aunt of the bride, poured punch, while Mrs. Carlene Ennet of Pinckney, cousin of the bride, cut the wedding cake. Mrs. Trudy Bell, the bride's sister-in-law, attended to the guest book.

After a one-week honeymoon, the newlyweds returned to their residence in Milan.

The former Miss Bell attends Pioneer High school, Ann Arbor, where she is enrolled in the Ann Arbor Adult Education Program. Mr. Norton is a 1973 graduate of Chelsea High school, and is currently employed by Edwards Brothers, Ann Arbor.

Phoebe Circle

Phoebe Circle of the First United Methodist church met at 1 p.m., Nov. 17, at the home of Joanne Weber. A dessert luncheon was served to the group by the hostess. Ten members and three guests were present.

Chairperson, Darrel Harris, presided at the meeting. The minutes of the last meeting were read and approved. The treasurer's report was read.

The November news sheet was read and discussed. Members voted to approve the proposed 1977 budget for United Methodist Women.

An offering was taken for the Heart and Hand House in Philippi, W. Va.

The hostess presented a Devotional meditation, using material from inspirational writings by Helen Steiner Rice and other poets. Leah Smith gave a commentary on the book entitled "Conduct Becoming to a Woman" by Elaine Magolis, which covered changes in the status of women during the 19th and 20th centuries.

The next meeting is scheduled for Dec. 15, 1 p.m., at the home of Caralee Hoffmeyer.

HELEN'S BEAUTY SHOP

8845 Dexter-Chelsea Rd.

Call Now

PHONE 426-2241

DAYS AND EVENINGS

BY APPOINTMENT

Senior Citizens

Discount 20%

LYNN'S BEAUTY SHOP

1106 CHELSEA-MANCHESTER RD.

(across from Village Motor Sales)

475-1591

★ Complete Hair Care

★ Air Conditioned

★ Free Parking

HOURS:

Monday thru Wednesday 9 a.m.-2 p.m.

Thursday 9 a.m.-7:30 p.m.

Friday 9 a.m.-5 p.m.

Saturday 9 a.m.-12 noon



Ruth Circle

Ruth Circle of First United Methodist church met Wednesday, Nov. 17, 1 p.m. at the Crippen Memorial Building. Mrs. Elaine McCalla and Mrs. Ada Gram served refreshments to 18 members and one guest in attendance.

The tables were decorated in keeping with the Thanksgiving season. One guest, Mrs. Velma Dorr was welcomed. The group also welcomed Mrs. Ira Wood as a new member of Ruth Circle. Chairperson, Miss Marjorie North, opened the meeting reading an article from Response Magazine on "Hunger at Home," followed by a reading entitled "Thanksgiving." Each member, in turn, then named the things they were most thankful for.

A thank-you note was read from Mrs. Mabel Snider for cards and flowers she had received during her recent illness. Another member, Mrs. Helen Pearson, is at the Chelsea Hospital. A collection was taken in the amount of \$25 to be given to further the work of Chelsea United Women.

Following the business meeting Miss Martha Carles turned the meeting over to Mrs. Helen Weiss

who gave a very interesting and timely book review on Dale Evans Rogers "Let Freedom Ring." Members then sang "The Battle Hymn of the Republic" and "America The Beautiful" with Mrs. Marjorie Harper at the piano.

Miss North's birthday was remembered by Ruth Circle members who sang "Happy Birthday" to her.

The meeting adjourned with a prayer circle led by Mrs. Louise Gaunt.

Eight new hospitals built by the Veterans Administration during the past five years provide almost 4,300 beds.

Magic Mirror Beauty Salon

Open Tuesday thru Friday

9 a.m. to 9 p.m.

/ Saturday, 8 a.m. to 3 p.m.

PHONE 665-0816

CARPET REBIRTH

Give your carpet a new lease on life
by cleaning it regularly.

JET SPRAY CARPET CLEANING

Use Your
BankAmericard

Phone 761-3025 or 475-1509
Ask for John Lixey.

NOTICE OF CHANGE

This is just to let you know that Kim Cantwell, formerly at Village Beauty Salon, is now managing and taking appointments at BEA-JAE BEAUTY SALON, 1610 Jackson Ave., Ann Arbor, 663-6837.

Flaming Pit dinner specials:

SUNDAY - MONDAY - TUESDAY

COUNTRY STYLE CHICKEN

Salad Bar - Potato or Vegetable

All You Can Eat!

ADULTS, \$3.15 CHILDREN under 12, \$1.75

WEDNESDAY - STEAK NIGHT

7-OZ. STEAK or SHISHKABOB - \$4.45

Salad Bar - Potato or Vegetable

FRIDAY - SATURDAY

Wide Open Selections for Your Pleasure

FISH FRY THURSDAY - All You Can Eat

ADULTS, \$3.15 CHILDREN under 12, \$1.75

Try Our Alaskan King Crab

Longhorn Lounge

1750 Washtenaw, Ann Arbor 971-1500

BULOVA

fashion
swingers



The regal Roman
calendar, snap-on
cover, \$110.00

The two-toned
oval, dark grey
dial, Goldtone
chain, \$79.95

The pear shaped
pendant,
Goldtone case,
Silver dial,
\$74.95

Bulova takes time off her hands and puts it around her neck with great style. Each shapely pendant is a 17 jewel of a watch, very precise and very provocative, swinging from its long, matching silver or goldtone accessory because it goes and shows... beautifully... with anything she wears. A lovely gift at a modest price.

WINANS JEWELRY

Merkel

HOME FURNISHINGS

Main Street in Chelsea. Open Monday and Friday nights until 9:00. Phone 475-8621

High School Honor Roll

12th GRADE—

Kelly Alder, Lisa Allhouse, Elizabeth Arbogast (all A), Julie Barnes, Chris Bennett, Wanda Boyer, Patty Brady, Kimberly Brown (all A), Kathy Buck, Diane Burg, Robert Burgess, Kathryn Burns, Julia Chapman, Lesley Clark, Lorraine Clark, Daniel Cobb, Neil Cockerline,

Christine Coffman, Douglas Craft, Gerald Doll, Kimberly Dresch, Jeffrey Eder, Donna Eeles, Karin Eisemann, Peter Feeney, Robert Fischer, Douglas Foreman, Phillip Frame, Susan Frisbie, Annette Gaken, Gail Gilbreath, Larry Guenther, Richard Haller (all A), Deborah Haworth, Gregory Hellner, Matthew Heydlauff, Barbara Hinderer (all A), Steve Hovater, Morris Johnson, Leona Karhumaki, Karen Keiser, Joseph Lakatos, Mary Landwehr, Susan Leach, Tammy Lorenz, Susan Mann, Kimberly Moore, Don Morrison, Donald Neadeau, Scott Owings,

Rene Papo, Bette Parks, William Paul, Dennis Petch, Susan Pfeiffer, Diana Plecher, Renee Pison (all A), Judith Powers, Laura Rademacher, Steve Renobins, Diana Roy, Pat Saarinen, Brenda Salyer (all A), Patricia Salyer, Trent Satterthwaite, Kathy Schmitt, Beth Schwartz, Kathy Sebestyen, Delany Seitz (all A), Linda Shaw, Karen Simon, William Smith, James Stahl,

11th GRADE—

Donald Aldrich, James Alexander, Albert Anderson (all A), Beck Armstrong, Jane Barnes, Jerald Benjamin (all A), Stuart Blacklaw, James Botsford, Rocky Brand, Charles Broderick, John Bullick, Laurie Campbell, Leonard Carlson, Darrell Crawford, Kimberly Dunn, Nancy Ery,

Bruce Fairbanks, Marc Feeney, Susan German, Susan Gerstler, Leslie Gilbreath, Janice Hamilton, Kim Harris, Holly Hoffmeyer, Joyce Hosier, Kenneth Jenkins, Deanna Johnson, Jeffrey Kiel (all A), Hyangjoo Kim, Jeannine Kleiber, Frank Kornex, Beth Lewis, Diane Luck, Jon McCormick, Elizabeth McKaig, Angeline Merkel, Carolyn Meyer, Brad Myers, Brian Neadeau, Colleen Nusca, Linda Osterle, Kimberly Olson, Gary Packard, Shannon Passow, Cynthia Pierce, Jeffrey Powell, Julie Prohaska (all A), Tammy Englist, Jeanette Raney, Mark Reilly, Denise Robbins, Anne Schabille, Carolyn Schardelt, Beverly Simon, Katherine Slater, Kathy Starkey, Patrick Stevenson, Timothy Stubbs, Judith Thompson, Terence Thompson, Shelly Warren, Lori Werner, Debbie Wilson, Thomas Young, Vickie Zeller.

10th GRADE—

Gayle Albrecht, Renee Alexander, Jeanine Arnett, Alan Augustine, David Baldwin, Cynthia Barais, Karen Beuerle, Daniel Blough,

Penny Bortles, Lucy Bott, Ellen Bury, Deborah Campbell, Tammy Collinsworth, Diana Cooley, Karen Dresch, Nancy Drew, Caroline Enderle, Patricia Faircloth, Matthew Feeney, Debra Harrison, Shelly Hatt, Susan Heller, Bryan Herlick, Kelly Hill, Susan Inglis, Sheryl Kiel, John Koepele, Michael Kropf, Caroline Lane, Margaret Lewis, Joan Liebeck, Michael Machesky, Patty McClanahan, Roger Moore, Cathy Myers, Mary Noah, Tamela Patrick, Meg Pennington, Janis Proctor, Becky Rohards, Dawn Roderick, Kristin Saarinen, Veronica Satterthwaite,

Candice Schirmacher, Marley Seitz, Thomas Severn, Sandra Shadon, Shelly Springer, Karen Stein, Jeff Stirling, Mary Stoll, Shella Tarasow, Theresa Thompson, Nancy Tison, Lori VanRiper, Cathy Villamure, Cathy Voita, Michael Waldyke (all A), Janet Walz, Cynthia Welshans, Douglas Wetzel, John Whitaker, Chris Williams.

9th GRADE—

Michael Benedict, Paula Bennett, Kaye Beyer, Karen Blanchard, Kent Bollinger, Mary Bort, Kelli Borton, Julie Botsford (all A), Douglas Bowen, Tracy Catell, Brenda Classon, Deborah Connell, Karen Dault, Catherine Donkin, John Dunn, Alice Erke, Bradley Flahgan, Dawn Fowler, Cathryn French, Cynthia Gerstler, Thomas Hafner, Marilyn Hafner, Sarah Harschwardt, Laurie Hastings, Teresa Hoffman, Debbie Honbaum, Jill James, Michael Killelea, Marie Klink, Debra Koepele, Sharon Kropf, Steven Kvarnberg, Paul Lange, Elizabeth Merkel, David Morris, Jeanette Morrison, Eileen Musolf,

Cheryl Nadeau, Ann O'Hagan, Lee Owings, Douglas Pichlik, Valisa Pletcher, Scott Prohaska, Kate Quackenbush, Ruth Ratzlaff, Kollet Rinehart, Sue Schafer, Amanda Schwarze, Pat Shoemaker, Kimberly Slater, Julia Smith, Drew Sprague (all A), Shannon Springer, Pamela Stephens, Timothy Sweeney, David Waldyke, Sandra Welshans, Elizabeth Wireman, Cynthia Wolter.

"What's cooking in Michigan"
by Carl B. Olson
Michigan Dept. of Agriculture

As we approach Thanksgiving, I can't help but think of the meal that is really an American heritage—roast turkey with stuffing. Those of you who have seen the play "1776" know the bald eagle was not Ben Franklin's choice to be our national bird. He wanted the turkey and I'm not sure I blame him.

Roast turkey recipes are pretty much alike. The big decision comes with the dressing. A rather interesting statement comes from a book I have in my library published in 1905 by the F. B. Kickeron Co. of Detroit. The title is, honestly, "Dr. Chase's Third, Last and Complete Receipt Book and Household Physician, or Practical Knowledge for the People, from the Life-Long Observations of the Author, Embracing the Choicest, Most Valuable and Entirely New Receipts in Every Department of Medicine, Mechanics, including a Treatise on the Diseases of Women and Children; in Fact, the 'Book for the Million'."

In discussing turkey dressing in his "book for the million," Dr. Chase said, "The dressing may be simply fine bread crumbs, seasoned with salt and pepper and a little butter, moistened with water or milk and a beaten egg, and you may add sage, onions, oysters, raisins, etc., any or all of them; or sage, thyme or marjoram or summer savory, as you like, have on hand or can get." There are about as many different recipes for stuffing as there are cook books but it all boils down to "as you like, have on hand or can get."

Food specialists from the Michigan Department of Agriculture urge you to keep in mind that no matter what kind of stuffing you use, do not stuff the bird until you are ready to put it into the oven. Putting the stuffing in the night before could cause food poisoning as the dressing doesn't cool fast enough in the cavity to keep it safe. Also, after dinner remove the stuffing and refrigerate immediately.

AGRICULTURE IN ACTION

MICHIGAN FARM BUREAU

★ Thanksgiving Message ...

By Elton R. Smith
President, Michigan Farm Bureau

While you are preparing your Thanksgiving feast seems a good time for a producer of the food you will be enjoying, to tap you on the shoulder and say, let's chat for awhile. I'd like to take you beyond the supermarket shelves from which you stocked your cupboard for this special occasion back to the farm where that turkey, those mashed potatoes, cranberries, pumpkin pie and whipped cream, originated.

Those of you who remember visits to grandmother's house, in the country would find a marked contrast between the farm of your memories and the farm of today. An ever-increasing world population and demand for food and fiber has transformed agriculture into a highly-efficient industry with farmers using complicated, expensive equipment and scientific techniques.

In fact, we have become so efficient that only four percent of our population produces the food and fiber for the other 96 percent. That means you are freed from having to produce your own food so you can pursue the vocation of your choice. All of us have benefitted from that productivity.

But, let's face it, with that modern efficiency, we have "lost touch" with each other and that concerns me. We're a minority and we need your understanding and because if we don't have it, farmers and consumers often end up on opposite sides of an issue. Take embargoes and boycotts, for example. If we are to continue to produce food and fiber at full production, we must maintain strong markets abroad for U.S. farm commodities. This is necessary to offset our higher production costs and to improve per farm income so our family farmers can stay in business. Any action that stifles our productivity hurts us both.

The use of agricultural chemicals is another area where there is often misunderstanding. We, like you, are interested in a clean environment. This is possible with reasonable use of the chemicals we must have for the good health of our crops. We need more people working in government regulatory agencies who have an agricultural background as well as a strong desire for a clean environment. Often, that has not been the case in recent years.

We need your understanding about farm prices—that while they do go up, they can and do come down just as rapidly. However, our production costs, which have doubled in recent years, seldom go down. Farmers are big consumers, too, and when we buy a tractor or combine, we ask: how much is it? However, when we sell our crops, we must ask the buyer: how much will you give me for my product? That's a big difference, one of which you may not have been aware.

With your understanding and support on issues, the American family farmer can stay down on the farm growing food and fiber for you. That's where he wants to be and that's where you need him.

Please Notify Us
In Advance of
Any Change in Address



FAMILY NIGHT was Wednesday, Nov. 17 for Brownie Troop 145. Present were, left to right, first row, Tina Kuhl, Kim Clutter, Paula Colombo, Shelda Friday and Heather Seabury; second row, Shelly Boham, Chris Schlup, Laura Stephens, Annette Duhamel, Kathryn Morgan, Tina Chene; third row, Amy Wolfgang, Jennifer Kopalka, Michelle Kuhl, Angie Jacobinski and Pam Brown. In back row are Barb Seabury and Marie Colombo, leaders. Brownies not present include Francis Schmidt, Catherine Coffman, and Sauna Williams.

Extra Care Needed To Prevent Holiday Food Poisoning Cases

Foodborne diseases run rampant during the holidays when rich, piquant foods are being prepared and served lavishly in the home, says B. Dale Ball, director of the Michigan Department of Agriculture.

Few cases make the news but many food poisoning incidents occur in homes each year. "The Michigan Department of Agriculture is responsible for assuring the safety of the public food supply from farm to market," Ball said, "but it's the consumers' job once the products leave the store."

According to Dr. Edward Heffron, MDA Food Inspection division chief, that holiday buffet of roast turkey, dressing, cream pie

or custard may be appetizing but it's also potentially hazardous and should be handled with care.

"Foods containing milk or milk products, eggs, meats, poultry or fish require refrigeration and should not be left standing for long periods of time," Heffron said. "The best way to guard against possible contamination is to put leftovers in the refrigerator immediately after the meal."

Heffron said in preparing your Thanksgiving bird, cooking it to an internal temperature of 185 de-

grees F. is necessary to destroy organisms which can cause food poisoning. If preparing dressing, it's important to place it in the turkey just before roasting and remove it from the cavity before storing in the refrigerator.

If someone in the family does become ill and you suspect food poisoning, call your doctor or local health department. Heffron advises, then call MDA to investigate and be sure to save a sample of the food for analysis in the MDA laboratory.

The Michigan Department of Agriculture's main office is in Lansing with branch offices in Escanaba, Traverse City, Grand Rapids, Benton Harbor, Detroit and Frankenmuth.

FRIDAY SPECIAL
ALL THE FISH YOU CAN EAT
\$2.75 PER PERSON
We offer complete dining facilities and carry-out service.

HOME-MADE PIZZAS after 5
COMPLETE DINNERS - SNACKS - SANDWICHES

HOURS: Tuesday thru Thursday, 4 p.m. to 10 p.m.
Friday, Saturday, Sunday, 11 a.m. to 10 p.m. Closed Mondays.

LITTLE ROOSTER RESTAURANT
Phone 426-8668 11485 N. Territorial Rd.

Microwave Oven Demonstration Slated Tuesday at Extension Service Offices

Is there a microwave oven in your kitchen? Do you plan to buy one? Do you wonder if microwave cooking is for you? Then plan to attend a microwave demonstration sponsored by the Co-operative Extension Service, Tuesday, Nov. 30 at 8 p.m. in Extension's meeting room, at the Washtenaw County Service Center.

According to Helen Fairman, Extension Home Economist, the demonstration will include tips and ideas on how to use, enjoy, save time and energy with a microwave oven, plus a discussion of realistic expectations for microwave cooking. Dorothy Downer, Regional Consumer Service Advisor for Detroit Edison will do the demonstrating.

Plan to bring the entire family to the demonstration. It is important for each family member to understand proper microwave procedures. Call 973-9510 to register for this free demonstration.

No sensible adult makes fun of young people today; thank you that they have more sense than their elders.

CALL OR STOP IN CHELSEA GLASS WORKS

WORKMANSHIP AND MATERIALS FULLY GUARANTEED.
Open Daily 8 a.m. to 5 p.m.; Sat., 8 a.m. to 1 p.m.

140 W. Middle, Chelsea Phone (313) 475-8667

WE REPAIR AND REPLACE:

- ★ STORE FRONTS
- ★ FURNITURE TOPS
- ★ SHOWER DOORS
- ★ THERMOPANES
- ★ AUTO GLASS - Including Windshields
- ★ MIRRORS
- ★ PATIO DOORS
- ★ TUB ENCLOSURES

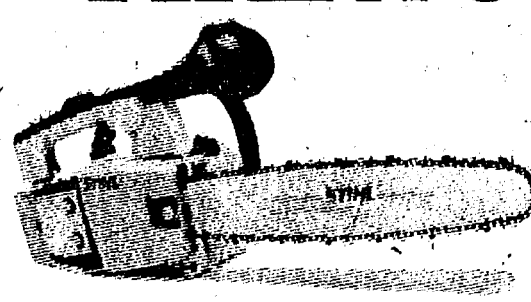
Free Pick-up and delivery on auto work.

Storm Door & Window Reglazing & Screens

COMMERCIAL BUILDINGS OR RESIDENTIAL

PROMPT SERVICE REASONABLE PRICES

FREE FIREWOOD.



If you live near a state forest and the thought of free firewood hits close to home, chances are you can have all the dead or on-the-ground trees you can sink your saw into simply by getting a permit from your state forester.

Call him for the rules. Call us for the saws.

BROUGHT TO YOU BY

STAL

FREE SPLITTING MAUL WITH EVERY SAW OVER \$200

(Saws start at \$119.95)

HURON VALLEY GARDEN CENTER

5024 Jackson Rd., Ann Arbor - 662-6714

SALES - SERVICE

REPLACE BROKEN GLASS in STORM DOORS
with **Warp's FLEX-O-GLAZE**
SAFETY ACRYLIC PLASTIC
SAFETY APPROVED FOR YOUR PROTECTION

FLEX-O-GLAZE is crystal clear, non-yellowing, guaranteed shatterproof. Safe... has no sharp cutting edges. Easy to cut, score or saw. Comes in standard sheet sizes.

Priced like glass. At Your Hardware, Lumber and Building Supply Store
WARP BROS. Chicago 60661
Pioneers in Plastics For Over 50 Years

REPLACE BROKEN GLASS IN COMBINATION SCREEN-STORM DOORS
with **Warp's ACRYLIC FLEX-O-GLAZE**
APPROVED BREAK-RESISTANT PLASTIC SAFETY GLAZING
BRANDED FOR YOUR PROTECTION
WE HAVE THE GENUINE GAMBLES

110 N. Main Phone 475-1422

Century self-contained water softener
compact convenience gets rid of washday blues

Gone are dull, drabby colors... stiff, starched laundry... gray shirts that should be white. With a Century water softener, wash days become brighter. And this beautiful compact unit frees-up floor space, makes your laundry area larger. Phone for details.

Master Charge and BankAmericard Welcome

CRYSTAL CLEAR CO.
STORE HOURS: Mon.-Fri. 9-5:30
Sat. 9-12. Closed Sundays
4757 Dexter-Pinckney Rd.
Dexter, Mich. - 426-4220

KIWANIS 2nd ANNUAL CITRUS FRUIT SALE!
Direct from the Groves in Sunny Florida
Tree-Ripened Florida Citrus Fruit

- ★ NAVEL ORANGES
- ★ GRAPEFRUIT (White and Pink)
- ★ TANGELOS

You may order all oranges - all grapefruit, or mixed, half and half.
Five days before the citrus fruit is on your table it was hanging on a tree in sunny Florida. Truly fresh Florida citrus fruit.

YOU CANNOT BUY THIS IN ANY STORE!
ORDER NOW! Receive the finest CITRUS FRUIT you have ever eaten... and help Kiwanis carry out their many community service projects.

CASE (4/5 bu.) \$8.50 **HALF CASE \$4.50**

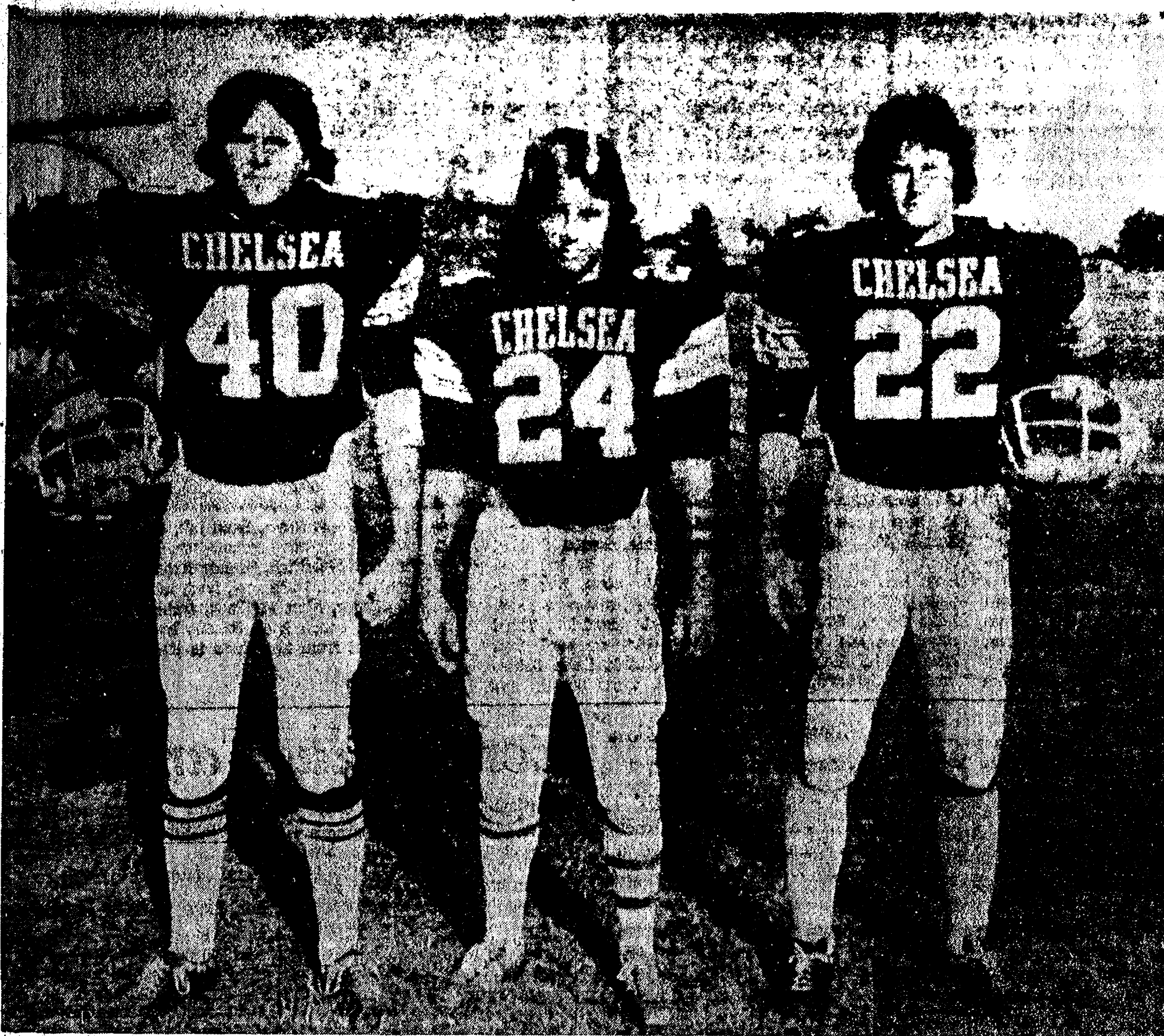
PLACE ORDERS WITH ANY OF THE FOLLOWING:

CHELSEA PRO HARDWARE
HEYDLAUFF'S
GAMBLES
RICK'S MARKET
STATE FARM INSURANCE
FRISINGER REALTY

KUSTERER'S FOOD MARKET
CHELSEA STATE BANK
FOSTER'S MEN'S WEAR
GROVE 5c to \$1 STORE
WESTERN AUTO
OR ANY CHELSEA KIWANIAN

ORDER BY DEC. 1 - DELIVERY DEC. 12

★ Gridders of the Week ★



BRUCE STUBBS (40), halfback for the Bulldogs varsity gridders, played defensive end 90 percent of the season, following a successful year as defensive end on the varsity squad in 1975. When asked to recall his most memorable game, the 5'10", 160-lb. CHS senior replied, "All of them were memorable, I don't think I'll forget any of them." According to Stubbs, Chelsea's games with South Lyon and Portland were the team's best, "because both teams were worse than we were and we won," he noted. Reflecting on Chelsea's poor performance this year, the griddler stated, "As a team, we just didn't have unity this season. A few seniors felt they were getting the raw end of the deal because so many juniors were playing, and it caused a lot of dissention." Stubbs predicts the Bulldogs will be a lot better next year, but declined to speculate on a projected record. He has two younger brothers and one younger sister, and is the son of Dr. and Mrs. Bruce Stubbs of Washington St.

MIKE CHECK (24) is a five-year veteran halfback who has played football for

Chelsea schools since 7th grade. A returning senior to this year's varsity squad, the 5'6", 147-lb. griddler cited Chelsea's game with Milan as his personal best this season. In that game, "I had an interception and 7 or 8 tackles," Check stated. Taking a retrospective view of the varsity team this year, he remarked, "We had a good team, but just did not have the proper enthusiasm, we couldn't get together. After our first loss, everything started going downhill." Continuing the perceptive dialog, Check added, "We faced a lot of pressure to duplicate the performance of last year's conference champion team, the whole town was used to winning." According to Check, Portland was Chelsea's best game this season because, "we made the least amount of mistakes in that game and we won." Speculating on next year, the griddler predicted, "this year's juniors saw how bad we were this year, so they will probably work harder and have a pretty good season next year." Check, who also plays hockey and baseball for CHS, has one older sister, three younger sisters, and one younger brother.

He is the son of Mr. and Mrs. John M. Check of Fahrner Rd.

JOHN ADAMS (22), a returning senior to the varsity squad this year, was a junior safety and fullback for the Bulldogs last season. While he mostly saw action from the sidelines last year, the 5'11", 170-lb. halfback started in most of this year's games. Adams was a powerful asset to the struggling Bulldogs this season, playing particularly well against three of Chelsea's strongest rivals. In the Portland game, he had 12 carries for 46 yards, to lead Chelsea in yardage gained, while against Novi, he was publicly cited for making key plays for the Bulldogs by his coach. In Chelsea's game with arch-rival Dexter, Adams scored the home team's only touchdown to climax a 12-play, 78-yard drive. An avid skier, the CHS griddler also plays baseball for Chelsea High. Adams was unavailable for comment on the team's performance this past season because he is presently on a deer hunting trip in northern Michigan. Adams has one brother, and is the son of Mr. and Mrs. Eldean Else of Flanders St.

St. Louis School Notes

The boys of St. Louis school capped a week-long period of activity with a Thanksgiving dinner at St. Francis church school, Ann Arbor, Tuesday evening before leaving for their homes today to enjoy Thanksgiving vacation, headmaster Fr. Umberto Mellare reported.

St. Louis school staff member, Fr. Fortunato Turati, supervised a group of youngsters between the ages of 8 and 14 at the Tuesday gathering, where the boys played games, received prizes, shared cookies, and sang songs.

St. Louis school boys routinely participate in social activities beyond the confines of a familiar setting in accordance with the school philosophy which seeks to encourage exposure to the outside world. The social confrontations are designed to advance their knowledge of general public behavior.

On alternate week-ends the boys remain at St. Louis school and generally take excursions to various places of interest. Last week, Bro. Natal Galvini, who is in charge of the older group of boys at the school, assembled a group of 14- to 18-year-olds for a trip to the Wayside Theatre. There, the boys watched the film, "The Adventures of the Wilderness Family."

That same day, Fr. Turati escorted several 8- to 14-year-olds to Briarwood in Ann Arbor. The boys were shown the variety of goods available at the mall, and were taught to respect property, the value of money, and high market prices.

On Saturday, Nov. 20, some 8-, 9-, and 10-year-old boys took a trip to the Irish Hills where they went up and down the hills, admired the lake and scenery, and visited the local St. Joseph Shrine.

Remaining at the school one day last week, all St. Louis boys were further immersed in practical life when the conservation department brought a deer to the school. The animal had been killed accidentally on Chrysler Proving Grounds during an automotive test.

Very much aware of the pervasive deer season atmosphere in Chelsea lately, the boys exhibited excitement, interest, and compassion upon seeing the animal, according to Fr. Mellare. All expressed a desire to taste venison.

A highlight of last week-end's social activities occurred Sunday night with a dance party at the school. "The party went beautifully, and the girls who attended had a terrific time," Fr. Mellare stated.

After dividing into three groups, the boys danced with a group of girls who attended the function as a First United Methodist church project. Following the dancing, the boys sang Christmas songs for their guests, and the girls responded by singing the Michigan Fight Song, the CHS Fight Song, and Jingle Bells to the St. Louis school youngsters.

Before leaving for the evening, the girls were given a tour of the St. Louis school grounds and facilities, and were served refreshments.

Although it is a Catholic institution, St. Louis school has no denominational requirements for admission. The school relies on tuition fees for its sole financial support as it receives no state aid. While no religious dogma is taught at the institution, the boys are instructed to respect others for the sake of God, and to lead an honest life.

Dial-A-Garden Topics Listed

Dial-A-Garden, the system of pre-recorded daily gardening tips is sponsored by the Washtenaw County Co-operative Extension Service. The system is in operation 24 hours per day, 7 days per week. Interested persons are invited to call 971-1122 at their convenience and receive timely, up to date gardening information.

Healthy plants contribute to warm, welcoming settings for homes and businesses. For the month of December, Dial-A-Garden will feature House Plant of the Day. Dial every day and learn which plants will grow in corners with no direct sunshine, how to encourage others to bloom, and how to keep all your plants green and smiling.

Next week's Dial-A-Garden topics are:

Friday, Nov. 26—"Slow Burning Hardwoods Make the Best Fire."

Monday, Nov. 29—"Cast Iron Plant."

Tuesday, Nov. 30—"Chinese Evergreens."

Wednesday, Dec. 1—"Purple Heart."

Thursday, Dec. 2—"Creeping Fig."

Telephone Your Club News To 475-1371.

Thinking CARPET? Think SCHNEIDER'S



Visit the wonderful world of carpeting at Schneider's, one of the area's finest, full-service carpet stores, conveniently located in West Ann Arbor on Wagner Road between Jackson and Liberty.

Schneider's carries a broad selection of quality, name-brand carpets at prices consistently among the lowest in the entire area. Try us.

662-9332

OPEN MON & FRI NIGHTS TIL 8:00 PM

SCHNEIDER CARPET CO. INC.

745 S. WAGNER RD. ANN ARBOR

Advertise Your Auction in The Standard!

**WE WILL BE CLOSED
THANKSGIVING DAY, THURS., NOV. 25
AND REMAIN CLOSED UNTIL NOV. 29
RE-OPEN MONDAY,
Nov. 29 at 5:30 a.m.**



Come in and try our meals. Where food is good and service unexcelled.

**OPEN DAILY
5:30 a.m. to 7 p.m.
EXCEPT SUNDAY**

CHELSEA RESTAURANT

Ella - Noel - Ruth - Dorothy - Kay - Estelle
Mary - Stan

Jiffy market

Big Enough To

Serve You . . . Small Enough To Know You!

PHONE 475-1701

SALE PRICES GOOD NOV. 26 - NOV. 28, 1976

TOP VALUE FOODS - GUARANTEED SATISFACTION - COURTEOUS SERVICE

COMPLETE FRESH MEAT DEPT. - USDA CHOICE BEEF - THE FINEST OF FRESH PORK

SPECIALS for Fri., Sat., and Sun.

U.S.D.A. CHOICE	HICKORY SMOKED	FRESH GROUND ALL-BEEF
RIB STEAKS	SLAB BACON	HAMBURGER
\$1.39 lb.	89¢ lb.	79¢ lb.
FARM - MAID FRESH	WONDER COUNTRY - STYLE	16-Oz. No-Return Bottles
HOMO. MILK	BREAD	COCA-COLA
\$1.39 gal.	3 1 1/4-Lb. Loaves \$1.00	Eight 1-Pt. Bottles equals 1 Gal.
SKIPPY	CIGARETTES	MARATHON
Peanut Butter	All Brands - All Sizes	REG. GAS
1-Lb., 2-Oz. Jar 88¢	\$3.98 Crtn.	58.9¢
	Carton of Ten Packs	Incl. All Taxes

**Open With Complete Service, 7 Days A Week
7 a.m. MORNING to 10 p.m. NIGHTS**

Sale Prices
Nov. 26
Thru
Nov. 28

Snowmobile Safety Classes Set

Washtenaw County Sheriff's Department is conducting snowmobile safety classes under the supervision of the Michigan Department of Natural Resources.

Effective Jan. 1, any youngster 12 through 15 years of age may operate a snowmobile if:

"He is under the direct supervision of a person 18 years of age or older. Direct supervision requires the person to be in the immediate vicinity and directly observing the snowmobile operator."

"He has in his possession a snowmobile safety certificate."

"He is on land owned or under the control of his parent or legal guardian."

"A snowmobiler 12 through 15 years of age may cross a highway or road only if he has a valid snowmobile safety certificate in his possession."

The snowmobile safety class offered consists of 8 hours of instruction including maintenance, operational procedures, law, safety, and first-aid. The classes will be conducted through the co-operation of the local school districts, dates and times are as follows:

Chelsea (Beach Middle school). Nov. 16, 17, 18, 19, 3:15 to 5:15 p.m.

Milan (Middle school), Nov. 16, 17, 18, 3:30 to 5:30 p.m.

Saline (Middle school), Nov. 15, 16, 17, 18, 7:00 to 9:00 p.m.

Manchester (High school), Nov. 29, 30 and Dec. 1, 2, 7:00 to 9:00 p.m.

Whitmore Lake (High school). Dec. 6, 7, 8, 9, 7:00 to 9:00 p.m.

Dexter (Middle school), Dec. 7, 8, 9, 10 (during class hours).

Ann Arbor City, Ypsilanti City, Willow Run, Lincoln School Districts; Washtenaw County Service Center, 4133 Washtenaw Ave., Ann Arbor; Criminal Justice Training Center, Classroom No. 2, May attend either session, Dec. 6, 7, 8, 9, and 13, 14, 15, 16, 7 to 9 p.m.

Parents are invited and encouraged to attend.

Further information may be obtained by calling Washtenaw County Sheriff's Department, at 971-8400 ext. No. 46 or Bruce Todd, 971-4210 (Ann Arbor Joycees).

Swine Flu Clinic

A Swine Flu clinic will be held Monday, Nov. 29 at Dexter High school from 4 p.m. to 8 p.m.

Telephone Your Club News To 475-1371.

**Residential - Commercial
REMODELING**
FREE ESTIMATES
**Ib V. JENSEN
and SON**
LICENSED BUILDER

378 Spring Lake Drive
Chelsea, Mich.
PHONE 475-1820

CUSTOM

BUMPING and PAINTING
FREE ESTIMATES - ALL MAKES

Get the Best for Less!

FRANK GROHS CHEVROLET
Phone 426-4677 Dexter, Mich.

DISCOUNT SUNDAY

From 12 Noon to 6 p.m., Sunday, Nov. 28

Pick a candy cane off our tree as you pay for your purchase then we will honor whatever discount it is marked.

10% - 20% - 30% 40% Off

FREE COFFEE and COOKIES
GIFT WRAPPING

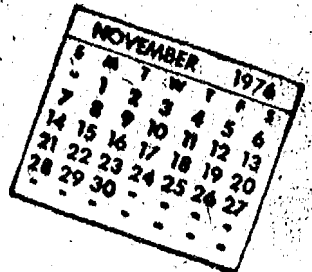
Your BankAmericard or Master Charge Welcome

KAREN'S BOUTIQUE

118 SOUTH MAIN ST.

PH. 475-2678

Community Calendar



Past Presidents Club of American Legion, Nov. 30, 6:30 p.m., at the Methodist Home. Pot-luck dinner followed by meeting.

St. Barnabas Bazaar, Thursday, Dec. 2, 11 a.m. to 4:30 p.m. Christmas decorations, baked goods, bird feeders, Christmas gifts, boutique, Luncheon, \$1.50, from 11:30 a.m. to 1 p.m. St. Barnabas Episcopal church, 20500 Old US-12 W. adv. 25

Stockbridge American Legion dance Dec. 4, 9 til 1. Music by the Researchers. adv25

Lima Township Board December meeting has been postponed from Dec. 6 to Dec. 13 in Lima Township Hall, 8 p.m.

Inquiries regarding the Chelsea blood bank may be directed to Harold Jones in the event that Mrs. Dudley Holmes is unavailable, or to Cornelia Fry, American Red Cross in Ann Arbor, 971-5300.

Beginning Nov. 16, Lyndon Township Board meetings, previously held on the third Thursday of each month, will instead be held the third Tuesday of each month, 7 p.m., at Lyndon Town Hall.

Child birth preparation classes, Lamaze method, are being held at Chelsea Community Hospital Tuesday evenings. Contact Dee Burkel, 475-9316, for information.

Chelsea Senior Citizens every Friday at St. Mary school hall on Congdon St. First Friday of the month, cards, 7:30 p.m.; second Friday of the month, cards, 7:30 p.m.; third Friday of the month, pot-luck and cards, 6:30 p.m.; fourth Friday of the month, business meeting and cards, 7:30 p.m.; if there is a fifth Friday of the month, cards, 7:30 p.m.

AA and Al-Anon meeting, Monday evenings at Chelsea Hospital, 8:30 p.m. Closed meetings.

Chelsea Jaycees general membership meeting first Tuesday of each month, 7:30 p.m. at Chelsea Lanes. Monthly board meeting last Tuesday of each month, 7:30 p.m. at Inverness Inn.

Chelsea Social Service hours are Thursday, 10 a.m. to 4 p.m., or call 475-1581, or 475-1012.

Sharon Township Board regular meeting first Thursday of each month.

Flea Market, North Lake United Methodist church, beginning May 8 and every Saturday thereafter, 10 a.m. to 4 p.m. Lunch counter. Dealers wanted. adv46tf

Chelsea Rebekah Lodge No. 130 regular meetings the first and third Tuesday of every month, 7:30 p.m.

Lima Township Planning Commission regular meeting the third Tuesday of every month, 8 p.m. at the Township Hall.

Olive Lodge No. 156 F&M Past Masters' Night, Tuesday, Nov. 30, beginning 5:30 p.m. at the Lodge. Master Mason's Degree. Dinner at 6:30 p.m. For reservations, call Bob Schaffer by Nov. 26, 475-8909.

Cavanaugh Lake - North Sylvan Grange Dec. 7, 12:30 p.m. at the home of Mr. and Mrs. L. Y. M. Adams, 114 N. East St., for pot-luck birthday dinner. Bring own table service and dish to pass.

Washtenaw Genealogical Society, Sunday, Nov. 28, on the 8th floor of Hatcher Library, University of Michigan, Central Campus. Use south entrance, S. University Ave. side, and take elevator to 8th floor. Those who wish individual assistance should arrive 1 p.m., general meeting, 2:30 p.m., Marjorie Drake will speak on topic, "How to use the card catalogue for fun and genealogical gain."

Chelsea Athletic Booster Club, approximately 9 p.m., Nov. 29, CHS cafeteria for nomination and election of officers.

Chelsea Home Meal Service delivers one hot meal a day to elderly and disabled living in the Chelsea area. For information call 475-8014 or 475-2923.

Bazaar and Bake Sale, Friday, Dec. 3, 9 to 5; Saturday, Dec. 4, 9 to 1. By VFW Ladies Auxiliary at Post Home, N. Main St. Free coffee. adv24

Parents Special Education group, fourth Monday of each month, 7:30 p.m., room 204, Chelsea High school.

Former Pastor Honored
(Continued from page one)

Pastor R. J. Ratzlaff who served as master of ceremonies. The Rev. Orville Willman, pastor of Bethlehem church, Ann Arbor, chairman of the Ann Arbor-Jackson Association Committee on Church and Ministry and the Rev. Roman Reineck, pastor of Bethel Manchester, moderator of the association, brought greetings from these ecclesiastical groups. President of St. Paul church, Walter Hamilton presented a gift from the congregation and Ruth Ratzlaff presented a gift box containing cards and greetings from the congregation and others. Mrs. Tom Bust spoke in reminiscence of Pastor Grabowski's long pastorate at St. Paul church. M. Michael Suzuki and Mrs. Mary C. Olney led the assembled group in singing "Happy Birthday" and "Blessed Be The Tie."

Members of Pastor Grabowski's family from Illinois, Flint and Ann Arbor shared in the day's observance.

Please Notify Us
In Advance of
Any Change in Address

DEATHS

Mrs. George R. Young
Former Waterloo Resident
Dies at Westland Hospital

Mrs. Florence Young, 91, of Westland and formerly of Waterloo, died Wednesday evening, Nov. 17, in Annapolis Hospital, Westland.

She was born Sept. 23, 1885, in Tunker, Ind., to Frederick and Charlotte Wise Hummel. On May 19, 1912, she married George R. Young. He preceded her in death on Dec. 18, 1971.

Mrs. Young is survived by one son, Robert, of San Jose, Calif.; (Louise) Kuhn of LaPorte, Ind., and Mrs. Frank (Janice) Kelley of Westland; eight grandchildren and five great-grandchildren. A son, Robert, and six sisters preceded her in death.

Funeral services were held Saturday, Nov. 20, at Burghardt Funeral Home. Burial followed in Glenwood Cemetery, Wayne.

Katherine Wagner
Named to County
Library Board

Katherine Wagner, a life-long resident of Chelsea, has been appointed to the Washtenaw County Library Board of Trustees, Debra A. Leabu, head librarian of McKune Memorial Library reported Monday.

Mrs. Wagner, whose five-year term will expire Dec. 31, 1981, also serves on the McKune Memorial Library Board as treasurer. She is the wife of Frederick Wagner, owner of Dexter Cider Mill, Dexter.

Lima Extension Group
Sees Demonstration on
Cardio Resuscitation

Lima Center Extension Club met Nov. 10 at 10:30 p.m. at the home of Mrs. Leroy Feldkamp with Mrs. Andrew Tykoski as co-hostess.

Norman Fattel, respiratory therapist from Beyer Hospital, Ypsilanti, demonstrated cardio pulmonary resuscitation.

A pot-luck lunch was served at noon.

A letter was read concerning the wall hanging which was given to the Lima Township Board by all women of the township.

The Christmas meeting will be Dec. 8 at noon at Lima Township hall. Hostesses will be Lois Bradbury, Elsa Ordway, Mary Hagel, Merl Coy. There will be an exchange of home-made gifts valued at \$2. A collection will be taken for the Spaulding Home for Children.

4-H Horse Club
Organizing Monday

The Ring Riders 4-H Horse club is having their fall membership meeting at Sleepy Hollow Ranch on Monday, Nov. 29, from 7:30 p.m. 'til 8:30 p.m.

Any youth from 10 to 17 years of age and residing in Washtenaw county or any adult interested in becoming a leader is invited to attend. The address is 11335 Island Lake Rd., Dexter (between Dexter and Chelsea) or phone 426-8097 for more information.



VARSITY GRIDDERS: These members of the 1976-77 CHS varsity football team will be among those honored at Chelsea High's annual Fall Athletic Banquet on Monday, Nov. 29. The Bulldogs, who finished their season with a 2-7 overall record, never quite merged to form a cohesive grid machine this year. However, with a large number of experienced juniors returning next year, Chelsea can look forward to a powerful, effective squad next fall. On this year's varsity roster, front row, from

left, are Bruce Bennett, Howard Bush, John Push, Mark Smyth, Tony Robards, Anthony Houle, Bruce Stubbs, John Adams, Rick Davis, and Al Dalton. Second row, from left, are Dave Classon, Mark Brennan, Bob Burgess, Jeff Sweet, Scott Owings, Don Nadeau, John Toon, Mike Check, George Menge, and Dale Headrick. Third row, from left, are Bob Gottfried, Gary Packard, Don Harris, Phil Steinhauer, Chuck Broderick, Dave Schrotenboer, Jeff Powell, Rick Beeman, Chris Smyth, and

Leon Brown. Fourth row, from left, are Victor Vercher, Todd Weber, Steve Pennington, Matt Fisher, Jason Lindauer, Todd Headrick, Brandy Reinhardt, Mike Young, and Rock Brandel. Fifth row, from left, are Tom Bareis, James Bollinger, Matt McClellan, trainer Jeff Kell, coach Jim Tallman, coach Rich Bareis, and head coach Phil Bareis. Absent from the photo is trainer Rick Brandel.

Psychology Award

Chelsea High school psychology students chose Susan Leach, a senior psychology student, as the third winner of the Psychology Student of the Fortnight Award.

Sue was nominated for this honor by her classmates in the fourth hour class. Her classmates based their decision on Sue's outstanding grades (Sue received an A for her nine weeks grade), on her portrayal of interest and on a good class attitude.

It's not difficult for Sue to have the attitude she has; she finds the class stimulating and she also enjoys participating in the class discussions. She is able to understand most of Freud's theories, but she doesn't really agree with all of them.

Sue will not be studying psychology as a career choice, but she is interested in continuing her studies of psychology by taking more classes in college.

Susan is the daughter of Mr. and Mrs. Melvin Leach of Cavanaugh Lake Rd.



SUSAN LEACH

Witnesses To Attend
Seminar in Holt

The Chelsea congregation of Jehovah's Witnesses will attend a semi-annual Bible seminar on Dec. 11 and 12, at their Assembly Hall in Holt. According to W. Bauer, Sr., presiding minister, about 65 Witnesses from the Chelsea area will participate.

Eleven other nearby congregations of Jehovah's Witnesses will assemble with the Chelsea congregation at the convention. This makes for an anticipated attendance of 1,600.

The Veterans Administration construction plans for fiscal year 1977 include a \$10 million computer center at Hines, Ill.

Basketball...

(Continued from page one)
In other basketball action, the JV's will open against Jackson NW Saturday, beginning at 6:30 p.m., just prior to the varsity game. Coaching the JV Bulldog cagers is Paul Terpstra. The freshmen cagers, coached by Jim Wintner, will travel to Jackson for their basketball debut.

CHS Varsity
Basketball Schedule

Saturday, Nov. 27—Jackson N. W.
Tuesday, Nov. 30—Columbia Central
Friday, Dec. 3—Open
Friday, Dec. 10—Novi* Away
Saturday, Dec. 11—Brighton* Away
Tuesday, Dec. 14—Pinckney Away
Friday, Dec. 17—S. Lyon* Home
Tuesday, Jan. 4—Milan* Away
Friday, Jan. 7—Dexter* Home
Tuesday, Jan. 11—Northwest Away
Friday, Jan. 14—Saline* Home
Tuesday, Jan. 21—Open
Tuesday, Jan. 25—Manchester
Friday, Jan. 28—Novi* Home
Tuesday, Feb. 1—Napoleon Away
Friday, Feb. 4—Brighton* Home
Tuesday, Feb. 8—S. Lyon* Away
Friday, Feb. 11—Milan* Home
Tuesday, Feb. 15—Manchester
Friday, Feb. 18—Dexter* Home
Friday, Feb. 25—Saline* Away
*Conference games.
JV games begin at 6:30 p.m.

Sgt. Robert Hunawill
Presented With Army
Commendation Medal

Robert H. Hunawill assigned to the 46th Combat Support Hospital, Fort Devans, Mass., was recently presented with the Army Commendation Medal and Meritorious Service award for outstanding leadership and management techniques while serving as Supply Sergeant in the 642 Engineer Co., 39th Engineer Battalion at Fort Devans. The award earned by SSG Hunawill cited his "close attention and adherence to sound supply principles and army regulations which were successful for returning the unit's supply room to a professional operation."

Lt. David Nolan, commander of the 46th Combat Support Hospital presented the award.

SSG Hunawill is the son of Mr. and Mrs. Harold Hunawill of Dexter.

DAVIDSON
STATION
BEER BATTER
FISH FRY
Every Friday Night
5 p.m. to 9 p.m.
A friendly family tavern
since Jan. 7, 1871.
113 S. MAIN CHelsea

Firemen's Association
Dance Proceeds
Go To Burn Center

Chelsea Firemen's Association donated \$270 to the National Institute for Burn Medicine several weeks ago, officials of the organization reported Monday. This amount represented the proceeds from a dance held by the association at the Chelsea Fairgrounds Oct. 2. Nearly 200 Chelsea residents attended the fund raising event.

Aquatic Club...

(Continued from page one)
Paula Beaudoin, Peter Beaudoin, Henry Vanderwaard, Todd Oxner, T. Gaunt, Sterling Vorus, Dave Marshall, Phil Hoffman, and Don Buckenberger.

Centennial Farm...

(Continued from page one)

The Centennial Farm program was inaugurated in 1948. Since then, more than 3,000 Michigan farms have been certified as being in the continuous possession of the same family for 100 years or more. Certificates are provided by the Division of Michigan History to commemorate 100 years of ownership and large metal markers are presented to each family by Detroit Edison and Consumers Power.

The Michigan History Division defines a farm as 10 acres or more in size, having estimated farm product sales of more than \$50 yearly, or less than 10 acres having estimated sales of at least \$250 yearly. A centennial farm comprises only the land and not

the farm buildings, which may be remodeled, or even new.

Two Area Women
Receive WMU Degrees

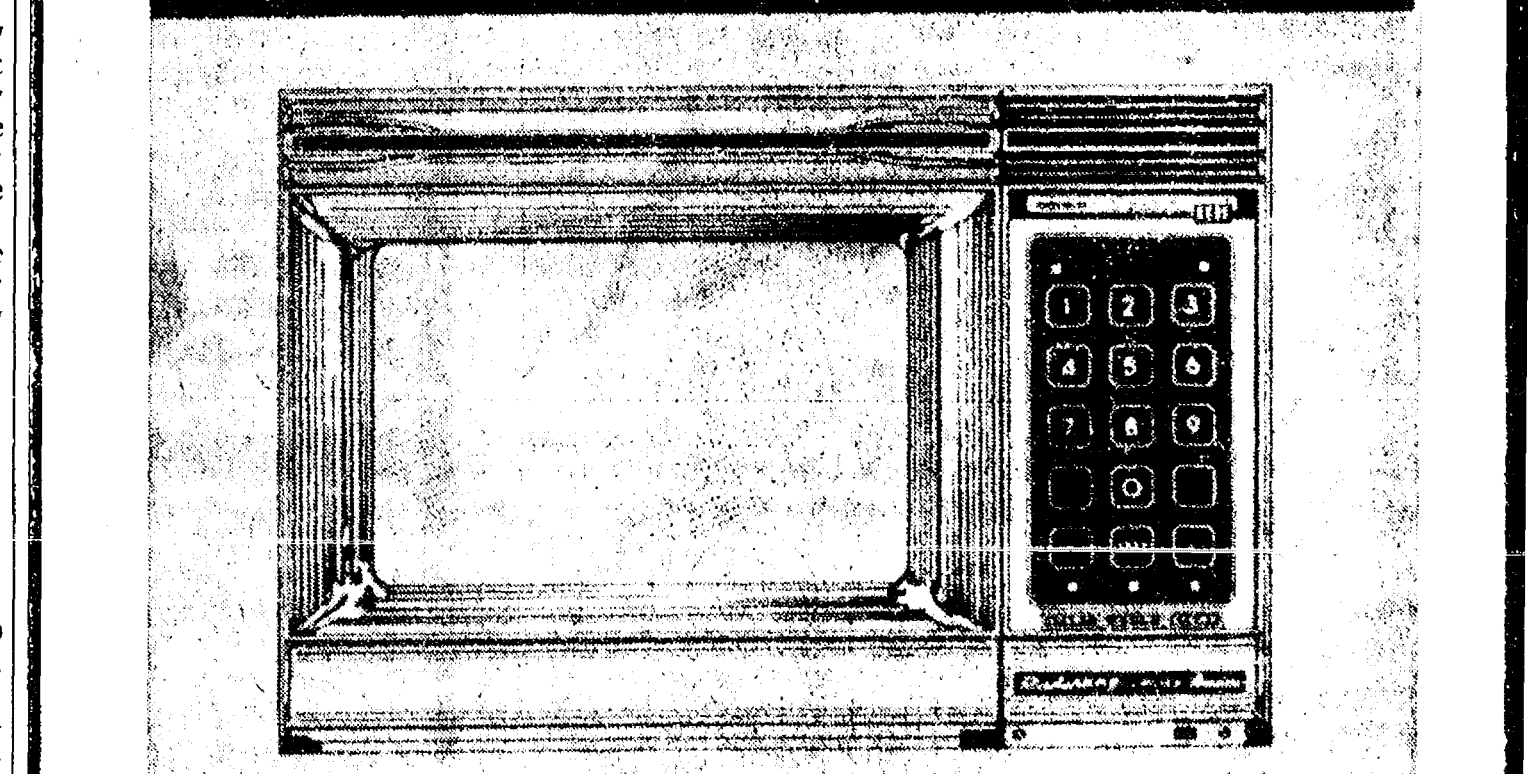
Two area women were among the 1,900 persons who received degrees from Western Michigan University in Kalamazoo at commencement exercises this fall.

Theresa Kay Kopinski, 2381 Weber Dr., received a bachelor of science degree. Any Lou Dettling, 340 Pierce St., Chelsea, earned a bachelor of business administration degree.

The Veterans Administration's construction appropriation for fiscal year 1977 is \$497.7 million.

Amana Radarange HOLIDAY SALE

The microwave oven
no other microwave oven
can touch...
the **Amana**
Touchmatic Radarange
MICROWAVE OVEN
with COOKMATIC POWER SHIFT



The first microwave oven with a memory.
Makes microwave cooking
as easy as 1-2-3!

SPECIAL SAVINGS
ON ALL RANGES

- Plus -

FREE 10" BROWNING SKILLET
and COOKING GRILL

HEYDLAUFF'S

113 N. Main St., Chelsea

Phone 475-1221

GAMBLES

Announce the
OPENING
of Our

FABULOUS
TOYLAND



Chelsea's
Largest Selection
of Toys
at Tremendous Savings!
ALL THE FAMOUS
NAME BRAND TOYS
Use Our Lay-Away!

110 N. MAIN ST., CHELSEA

PHONE 475-7472



Real Estate

By PAUL FRISINGER

REALTOR

TAX TIP IF YOU SELL FOR A PROFIT

Normally, taxpayers who sell their home for a substantial profit face a heavy tax load, but this burden can be avoided. If you buy another home that costs as much or more than the sales price of the old one, within a specified time, the profit from the sale is not included in your taxable income. The second home must be bought and occupied within a period ending 18 months after the sale. (This is a new change, previous time period was one year). A 2-year period is permitted when building a new home. This tax deferment applies only to the sale of a home which is the family's main residence.

When figuring the amount of gain for which tax may be postponed you may deduct for "fix-up" expenses if they were accomplished within 90 days prior to the sale, and paid for no later than 30 days after the sale. Check with your accountant or the IRS on details if this matter affects you. It could be well worth your while.

If there's anything we can do to help you in the field of real estate, please phone or drop in at FRISINGER REALTY CO., 935 S. Main St., Chelsea. Phone: 475-9681. We're here to help!

GIRL SCOUT NEWS



TROOP 683-

On Nov. 17, Debbie Morris brought treats. We are going jowling on Saturday, Nov. 20 from 3 to 5 p.m. We will have no meeting next week. Wendy Westphal, Julie Koch, Peggy Seyfried, Kathy Degener, Audrie Robertson, Debbie Bolanowski, Marie Kopolka, Kathleen Morris, Debbie Morris are working on active citizen.

Julie Koch, scribe.

BROWNIE TROOP 729

All the Brownies of Troop 729 met at Mrs. Erickson's house. We made bird-feeders and string popcorn. On Nov. 27, all the Brownies are going jowling.

Chrissy Favors and Tracy Harook, scribes.

Missionary Christmas Slated Sunday at Immanuel Bible Church

Missionary Christmas, an annual event at Immanuel Bible church, will be held Sunday evening, Nov. 28, with a pancake supper at 6 p.m.

After supper there will be the singing of Christmas carols, and the showing of a missionary film, "Tracy's Island," which is especially appealing to the children. The color motion picture was produced in the Caribbean and looks at missionary life through the eyes of a missionary child. A special offering will be taken and sent to several missionary families, supported by the church, as a Christmas gift to them.

Teri Lutovsky with Ferris Concert Choir

Teri Lutovsky, a Ferris State College student from Chelsea, is a member of the 120-voice Concert Choir at the college. The choral group opened its season in late October with a musical review entitled "Two on the Aisle" in Starr Auditorium.

William Donahue, conductor of the group, said the 1976-77 choir is one of the finest groups ever at Ferris. The choir performs on campus as well as at various functions throughout the state.

Miss Lutovsky is the daughter of Mr. and Mrs. Ray Lutovsky of 414 Dale St.

Telephone: Your Club News To 475-1371.

SCHOOL LUNCH MENU

Week of Nov. 29-Dec. 3

Monday—Beef and noodle casserole, peas and carrots, biscuits, butter, dessert, milk.

Tuesday—Sloppy joes with cheese, tater tots, carrot strips, peach cobbler, milk.

Wednesday—Pizza slice, vegetable, peanut butter sandwich half, mixed fruit, coffee cake, milk.

Thursday—Submarine, sauce, soup, crackers, applesauce, milk.

Friday—Fish burger, sauce, vegetable, potato sticks, dessert, milk.

CORRECTION

In the Nov. 11 issue of The Chelsea Standard, under District Court Proceedings, Robert Thornton was assessed with fines and costs of \$50 on charges of failing to have his operator's license on his person. This Mr. Thornton is an Adrian resident, and not Robert Thornton of Chelsea, owner of Thornton Real Estate.

FARMER PEET

BACON
99¢ lb.

PETER ECKRICH

SLICED BALOGNA
Reg. or Thick

1-Lb. Pkg. **\$1.09**

BISQUICK MIX
40-Oz. Box **95¢**

MORTON WATER SOFTENER PELLETS
80-Lb. Bag **\$3.29**

HAPPY THANKSGIVING DAY
To Everyone

RICK'S MARKET

20490 M-52

"The Store with the Spartan on the Door"

Phone 475-2898

BORDEN

EGG NOG
69¢ qt.

KEEBLER

FUDGE STRIPES
12 1/2-Oz. Pkg. **79¢**

KEEBLER

DELUXE GRAHAMS
13 1/2-Oz. Pkg. **79¢**

SPARTAN

BREAKFAST TREAT
1/2 gal. **59¢**

HAPPY THANKSGIVING DAY
To Everyone

BORDEN OLD FASHION

ICE CREAM
1/2 gal. **\$1.39**

BORDEN FRESH

WHIPPING CREAM
1/2 pt. **39¢**



RICK'S HOT BREAD DAILY

Weekdays by 3:30 p.m. Sat. & Sun., by 10:30 a.m.

(QUANTITY RIGHTS RESERVED)



GIRLS SWIMMING TEAM: These members of Chelsea High's first girls varsity swimming team captured the runners-up trophy at the Milan Swimming Invitational last Thursday to outrank both Dundee and Erie-Mason, who have had swimming programs for the last 10 years. While their performance was rather weak at the onset of the season, the girls won their last five consecutive meets for an over-all season record of 5-4. On the 1976-77 varsity team, first row, from left, are Mary Garrett, assistant coach;

Kelly Borton, Linda Vandervoort, Sue Inglis, co-captains Shelly Springer and Mary Stoll, Kim Slater, Richard Slater, manager, and Larry Reed, coach. Second row, from left, are Kathy Slater, Karen Dresch, Allison Hovater, Cathy Voita, Shannon Springer, Kollette Rinehart, Beverly Simon, Anne Schaible, and Linda Hamilton. Third row, from left are Shelia Tarasow, Michelle Kamysek, Sue Heller, Meg Pennington, Patti Hume, Sandy Shadoan, Jan O'Berg, and Kim Wood.

★ District Court Proceedings ★

Week of Nov. 16-22

Michael James pled guilty to charges of failing to stop in an assured and clear distance. Fines and costs, \$35.

Curt Heumann pled guilty to charges of speeding. Fines and costs, \$33.

Thomas Drake pled guilty to charges of disobeying a stop sign. Fines and costs, \$21.

William Dechert pled guilty to charges of assault and battery. He was sentenced to pay fines and costs of \$200 and to one year probation.

Carol Dailey pled nolo contendere to charges of failing to yield the right of way. Fines and costs, \$35.

Herman Garland pled guilty to charges of drunk and disorderly. Fines and costs, \$50.

Michael Lee Roup appeared in court on charges of failing to comply with sentencing. Fines and costs, \$50.

Michael Brigham failed to appear in court on charges of assault and battery, and possession of marijuana. A bench warrant was issued for his arrest.

Cynthia Murrell pled guilty to charges of possession of marijuana. She was referred to probation and will be sentenced Jan. 24.

Scott Nelson pled guilty to charges of reckless driving. Fines and costs, \$125.

Donald Smith pled guilty to charges of drunk and disorderly. He will be sentenced Jan. 11.

Floyd Speer was found guilty on charges of assault and battery. He was referred to probation and will be sentenced Jan. 24.

Gary R. Kurth pled nolo contendere to charges of receiving and concealing stolen property valued under \$100. He will be sentenced Jan. 11.

Perry D. Mead pled guilty to charges of speeding. Fines and costs, \$25.

John Lamb was found guilty on charges of driving under the influence of liquor. He will be sentenced Jan. 28.

James Manning failed to appear in court on charges of impaired driving. A bench warrant was issued for his arrest.

David Tarr pled guilty to charges of possession of pheasants over legal limits. Fines and costs, \$40.

Gerald Bridges pled guilty to charges of violating the basic speed law. Fines and costs, \$22.

Robert Johnson was fined \$50 for contempt of court after failing to appear in court on charges of speeding and disobeying a stop sign.

Brian K. Wright was sentenced to pay fines and costs of \$100, to pay restitution costs of \$64.37, and to 10 days on the probation department work program on charges of larceny of property valued under \$100.

Dan Ali Hussan pled guilty to charges of speeding. Fines and costs, \$40.

Steven O. Figg was sentenced to pay fines and costs of \$100 and to five days probation on charges of reckless driving.

Gary Shadley was sentenced to pay fines and costs of \$250 on charges of impaired driving.

Gary Shadley was sentenced to pay fines and costs of \$15 on charges of driving without an operator's license on his person.

Linda Walls was sentenced to pay fines and costs of \$150, and to one year probation on charges of attempting false pretences under \$100.

Timothy Fife pled guilty to

reduced charges of impaired driving. Fines and costs, \$250.

Donald T. Cunningham was found guilty on charges of committing a zoning violation. He was sentenced to pay fines and costs of \$100, and to one week in which to get his home off property or the township will remove it.

Rodney Schroeder was sentenced to pay fines and costs of \$100 or 30

days in jail, and 5 days on the probation department work program on charges of careless driving.

Robin Cousino pled guilty to charges of violation of probation. He was sentenced to 15 days in jail.

Kevin Kelly pled guilty to charges of careless driving. Fines and costs, \$35.

DAVIDSON STATION

BEST PIZZA IN TOWN

475-2675

the perfect gift

Buy Known Brands - Satisfaction Guaranteed!

English Leather®

HAGGAR socks

Looking good makes you feel good.

Curlee SPORT COATS

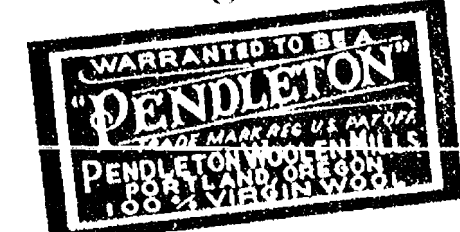
Women say they bring out the best in you!

Wolverine® Boots

OSHKOSH B'GOSH MATCHED SETS

WORKINGMEN'S CLOTHES

100% virgin wool



plaid shirts

FARAH® Slacks

VAN HEUSEN® FREEMAN SHOES

STRIETER'S CHRISTMAS STORE for MEN

Ads
Taken
fill 1 p.m.
Tuesday

PUT IT IN THE WANT ADS FOR RESULTS

Just
Phone
475-1371

WANT ADS

The Chelsea Standard

WANT AD RATES

PAID IN ADVANCE—All regular advertisements, 75 cents for 20 words or less, each insertion. Count each figure as a word. For more than 25 words add 3 cents per word for each insertion. "Special" ads or box number ads, 35c extra per insertion.

CHARGE RATES—Same as cash in advance, with 25 cents bookkeeping charge if not paid before 1 p.m. Tuesday preceding publication. Pay in advance, send cash or stamps and save 25 cents.

DISPLAY WANT ADS—Rate, \$1.40 per column inch, single column width only. 10-point and 12-point type only. No borders or boldface type. Minimum 1 inch.

CARDS OF THANKS or MEMORIALS—Single paragraph style, \$1.50 per insertion for 80 words or less; 3 cents per word beyond 80 words.

COPY DEADLINE—1 p.m. Tuesday week of publication.

ERRORS—Advertisers should check their ads at the first publication. This newspaper will not be liable for failure to publish an ad or for any typographic errors in publication except to the extent of the cost of the ad for the first week's insertion. Adjustment for errors is limited to the cost of portion of the ad wherein the error occurred.

PIANO TUNING, Chelsea and area. Facilities for reconditioning and rebuilding. Used piano sales, reconditioning, grands and vertically. E. Ecklund, 426-4429. x506f

Sand Gravel

KLINK EXCAVATING

Backhoe
Road Work - Basements
Trucking - Crane Work
Top Soil - Demolition
Drainfield - Septic Tank
Trenching, 5' up

STEP UP TO KOZMA CONSTRUCTION

And Step Down In Price

LICENSED BUILDER

FREE ESTIMATES

COMPLETE CONSTRUCTION SERVICES

CALL
LEN KOZMA
475-7452

WANTED HAY—First and second-cutting hay. Must be well baled. Charles Trinkle, call 475-7798, evenings. x114f

Sales People Wanted

Part- or full-time to handle cable vision orders and to market our new dual-channel home theater of family and adult movies without commercials. Call or visit Mr. Calvin Dyke, Ann Arbor Cablevision, 416 W. Huron St. Ph. 789-4707, 3-6:30 p.m. x24

FOR RENT—American Legion Hall. \$50. Call 475-7521. 40f

WANT ADS

PATCHING and PLASTERING
Call 475-7489. x34f

C—Custom Built Homes

O—hi! We Remodel too

U—can count on us

N—o Job Too Small

T—rim Inside & Out

R—ough-in Only If

Y—ou Want to Finish

S—iding Aluminum, 5" Gutters

I—mmediate Attention

D—ALE COOK & CO.

E—stimates. Free

BUILDERS

Please Call
475-8863

DALE COOK

CAR RENTAL by the day, week-end, week or month. Full insurance coverage, low rates. Call Lyle Christwell at Palmer Motor Sales, 475-1301. x25f

Fireplace Builder

Field stone mason, block and brick mason, tuck pointing.

FREE ESTIMATES

Call 475-8025 after 3 p.m.

Patrick Grammatico

J. R. CARRUTHERS

LICENSED RESIDENTIAL BUILDER

CUSTOM HOMES

ADDITIONS/FIREPLACES

PATIO

ROOFING/SIDING/REPAIRS

475-7234
CHELSEA

LOWREY BERKSHIRE deluxe or gan, with home study course. \$1,800. Ph. 904-6194. x524f

HORSESHOEING—Experienced horseshoer now shoeing in area. Bob Smithers, (517) 851-8479. x457f

CARETAKER WANTED

for
McKune Memorial Library

One bedroom apartment rent free in exchange for maintenance of building and grounds, beginning Dec. 15.

Apply at the Library Monday through Saturday, 12 noon to 5 p.m.

221 S. Main Street, Chelsea. x24f

WILL BABYSIT evenings and Saturdays in my home while you Christmas shop. 475-9542 after 6 p.m. x24

WANTED—Working man seeks 1-bedroom cottage or apartment within 20 miles of Ann Arbor. Rustic O.K. Call Bill, 426-3484. x24

WANT ADS

LEONARD REITH

Master Plumber

Licensed Electrician

Hot Water Heat

18238 N. Territorial Rd.

Chelsea, Mich. 48118

Phone: 475-2044

FOR SALE—1970 Cadillac DeVille coupe, beautiful condition. Easily mistaken for a newer car. Palmer Motors, 475-1301. x21f

DRY WALL—Plaster repair, sprayed acoustic ceilings. Ph. 426-2513. x24

DOWN AND DISABLED animals wanted. Call (313) 994-0185. x23

GRASS LAKE

3-BEDROOM, bath and a half, hardwood floors with some carpeting, gas utilities, full basement, unfinished 2-car garage, deep well.

WOLF LAKE, 3-bedroom, story and a half, new kitchen, fully carpeted, high and dry double wooded lakefront lot. Full walkout basement, 2-car garage, 100 amp. service. Owners ready to move. Let's talk about it.

52 ACRES—Greenwood Rd., just east of 9100. Terms.

2 ACRES up to 12 acres on Sager Rd. near Clark Lake Rd. exit. Terms. Two 3-acre parcels and one 6-acre parcel at the northeast corner of Bohne and Maute Rds.

Southside Realty

1-517-522-8469

CANE MOLASSES in your containers, \$5.40 cwt. Cole's Elevator Co., Gregory, 313-498-2735. x25

TWO SINGLE PEOPLE need two more responsible adults to share large home in country. \$80 per month plus share utilities and housework. Horse facilities available. Chelsea. 475-7548. x21f

DRYWALL TAPING

and Finishing, Textured Ceilings, Plaster Repair

Ph. 1-434-1007, Ypsilanti x24

10 ACRES LAKEFRONT

Beautiful, private, heavily-wooded retreat on scenic West Lake, just two miles from Chelsea. Chelsea schools. \$18,900. One-acre parcels also available. Land contract terms.

Ph. 475-9569

FOR SALE—Portable stored and 8-track combination, also woman's Ski-do snowmobile suit, helmet and boots, excellent condition. Ph. 475-9594 or 475-7951. x25

HOST, the beautiful way to dry clean carpets... beautifully. Rent the HOST Machine. Merkel Home Furnishings, Chelsea. 475-8021. x24

RN OR LPN WANTED—Full-time first shift, and relief nurse second shift. Charge nurse duties—medications and treatments. Geriatric nursing in Christian home. Please call Chelsea United Methodist Home, 475-8633. Ask for Mrs. Dehn. x25

RAW FURS WANTED—Now paying \$25 for top coon. \$100 cash for largest coon this season. No. 110 conibears, \$19.75 per dozen, dog food, \$13 a hundred. Also a complete line of coon hunter supplies, traps, stretchers, etc. Call Carson's Taxidermy, 11747 Ryan Rd., Munith, Ph. (517) 596-2505. x24f

PORTER'S TV SALES and SERVICE

QUASAR DEALER

Service on all TV makes and models.

Antenna Sales & Installation

CALL 475-8380

WANT ADS

VACUUM CLEANERS

Authorized Electrolux sales and service.

James Cox

428-8444, or 428-8088

118 Riverside Dr., Manchester 48f

Complete Body Repair Service

Bumping - Painting

Windshield and Side Glass Replacement

Free Pick-up & Delivery

Open Monday Until 9

CONTACT DON KNOFF

FOR FREE ESTIMATE

Village Motor Sales, Inc.

CHRYSLER - DODGE

PLYMOUTH - DODGE TRUCKS

Phone 475-8861

1185 Manchester Rd., Chelsea

Hours: 8 a.m. to 5:30 p.m.

Tues. thru Fri. Until 9 Monday

9 a.m. to 1 p.m. Saturday x14f

Headquarters for

RED WING WORK SHOES

Foster's Men's Wear 40f

For Rent

OFFICE SPACE IN DEXTER

NEW, carpeted, air-conditioned, up to 880 sq. feet. Reasonable. Call 426-3933, 9 a.m.-5 p.m. 1f

VACANT LAND

MANCHESTER schools, 10-acre site, \$15,900, land contract terms.

Chelsea Schools

EXCELLENT building site with fantastic view. 3 1/2 acres.

53 Acres

BEAUTIFUL rolling land with small lake on property. Property could be split.

Dexter Area

CARE-FREE HOME, 3 bedrooms, 1 1/2 baths. \$45,000.

FOR RENT—Chelsea, Dexter space for offices or small business.

ED COY REALTY

426-3948

Ed Coy, Broker

Ted Picklesimer, Salesman x22f

ALBER FARMS Orchard & Cider Mill

Sweet cider, maple syrup, barrels and kegs. Apples, now picking Jonathan, Red and Yellow Delicious, Northern Spy, Winesap.

Hours: 9 a.m. to 6 p.m.

13011 Bethel Church Rd. 428-7759 x11f

Chelsea Greenhouses

7010 Lingane Road Chelsea, Mich.

Phone 475-1353 or 475-1354

EVERGREEN WREATHS & BLANKETS—Made fresh daily in our greenhouses. Two-foot plain wreath, \$3; two-foot trimmed wreath, \$5; three-foot trimmed wreath, \$7.50; four-foot trimmed wreath, \$12.50; six-foot trimmed wreath, \$17.50; three-foot trimmed baby-blanket, \$7.50. Evergreen pine and cedar roping, 50c per yard.

Hours: Mon.-Sat., 8 to 5; Sundays, noon to 5 until Christmas.

Charter Member of FTDA

Teleflora Wire Services x22f

EXPERIENCED BARMAID wanted. Part-time. Apply Davidson Station, 113 Main St., Chelsea, 475-2075. x35

DEPENDABLE WOMAN will babysit in her home any time. Ph. 475-7513. 20

WANT ADS

Automotive Rust Proofing Cars and Trucks

Village Motor Sales, Inc.

CHRYSLER - DODGE

PLYMOUTH - DODGE TRUCKS

Phone 475-8861

1185 Manchester Rd., Chelsea

Hours: 8 a.m. to 5:30 p.m.

Tues. thru Fri. Until 9 Monday

9 a.m. to 1 p.m. Saturday x21f

HILLTOP, INC.

PLUMBING - HEATING

ELECTRICAL

Robert Shears, Master Plumber

Cold Weather Is Coming!

Call for an appointment today. Have your furnace checked, have your cottage winterized, be ready, don't be sorry.

FREE ESTIMATES

On New Furnace Installation

8316 WERNER RD., CHELSEA

Ph. 475-2949

STEER FEED—500 lb. lots. \$7.50 cwt. Cole's Elevator Co., Gregory, 313-498-2735. x25

Seasoned Firewood

BILL YOUNG

Ph. 475-7181

FOR SALE—1974 Mustang II Ghia 2-dr. A fine car with reference furnished. Palmer Ford, 475-1301. x21f

HOG CHOP—500 lb. lots. \$7.50 cwt. Cole's Elevator Co., Gregory, 313-498-2735. x25

FOR SALE—Shell office chair, gold with chrome base. Regular \$170; fabric slightly damaged. Will sell for \$25. Ph. 475-2428. x24

FOR SALE—1969-70 Chevy 350 and 307 engines, \$250. Low miles, warranty. Ph. 455-7108 or 459-0036. x24

FOR SALE—'72 VW, runs well, \$1,100. Ph. 475-7831 after 6 p.m. or week-ends. x50

DEMOS

'76 DODGE D-100 Club Cab, 133 wheelbase, 6 1/2-ft. box, 318, auto., p.s., p.b., AM-FM, speed control, steel radial tires. 2 to choose from. SAVE

'75 DODGE D-200, 318, 3-speed, p.b., 18,100 miles. \$3195

'75 RAMCHARGER, 2-wheel drive, 380, auto., p.s., p.b., air cond., roll bar. \$4995

'74 CHEVY Nova, 2-dr., 6-cyl., auto., p.s., p.b., 12,200 miles. \$2495

'74 DODGE CB-300 Kary van, 318, 3-speed, p.b. \$2995

'74 DODGE 1/2-ton, 6-cyl., 3-speed, low mileage. \$2195

'74 DODGE D-200 Club Cab, 318, auto., p.b., air cond., AM-FM, aux. tank, 31,000 miles. \$3395

'73 CHEVY van, 350, auto., p.s., p.b. \$2695

'73 DODGE D-300 12-ft. stake, 318, 4-speed, p.s., p.b. \$2495

'66 CHEVY 1/2-ton pickup. \$295

Used Trucks

'75 DODGE D-200, 318, 3-speed, p.b., 18,100 miles. \$3195

'75 RAMCHARGER, 2-wheel drive, 380, auto., p.s., p.b., air cond., roll bar. \$4995

'74 CHEVY Nova, 2-dr., 6-cyl., auto., p.s., p.b., 12,200 miles. \$2495

'74 DODGE CB-300 Kary van, 318, 3-speed, p.b. \$2995

'74 DODGE 1/2-ton, 6-cyl., 3-speed, low mileage. \$2195

'74 DODGE D-200 Club Cab, 318, auto., p.b., air cond., AM-FM, aux. tank, 31,000 miles. \$3395

'73 CHEVY van, 350, auto., p.s., p.b. \$2695

'73 DODGE D-300 12-ft. stake, 318, 4-speed, p.s., p.b. \$2495

'66 CHEVY 1/2-ton pickup. \$295

Quality Used Cars

'75 CHRYSLER New Yorker 4-dr., V-8, auto., p.s., p.b., air cond., power windows, power seat, AM-FM, new steel radial tires. \$5495

'75 CORDOBA, 360, auto., p.s., p.b., air cond., AM-FM, Landau roof, 21,331 miles. \$5195

'75 PLYMOUTH Fury 1-4 dr., V-8, auto., p.s., p.b., air. \$1195

'74 VALIANT 4-dr., 6-cyl., auto., p.s., one owner. \$1895

'74 COLT station wagon, 4-speed, radial tires. \$1695

'74 PLYMOUTH Fury 1-4 dr., V-8, auto., p.s., p.b., air. \$995

'72 CHARGER 2-dr. hardtop, 318, auto., p.s. \$1395

Village Motor Sales, Inc.

CHRYSLER - DODGE

PLYMOUTH - DODGE TRUCKS

Phone 475-8861

1185 Manchester Rd., Chelsea

Hours: 8 a.m. to 5:30 p.m.

Tues. thru Fri. Until 9 Monday

x24f

MANAGEMENT POSITIONS

Now taking applications for convenience store managers. Insurance, paid vacation and other benefits. Some retail experience necessary. Interested parties may apply at 1767 Whittaker Rd., Ypsilanti, Mich., corner Huron River Drive, or call Mr. Yuma, Monday through Friday, between 5 and 7 p.m., at 697-6052 for appointment. 27

WANT ADS

FOR RENT—Fair Service Center for meetings, parties, wedding receptions, etc. Weekdays or week-ends. Contact John Wellnitz, phone 475-1518. x31f

THANKSGIVING GREETINGS

from

— THORNTON

475-8628

WOULD YOU BELIEVE

— This older home in the Village of Chelsea has over 2,500 sq. ft. including 6 bedrooms,

LITTLE WANT ADS! BIG PLUSES FOR BIG RESULTS!

JUST PHONE
475-1371

WANT ADS

- YOUNG -

We list and sell lake, country and town properties. Eugene Young, Real Estate & Builder, 878-3792, 1506 Dexter-Pinckney Rd., Pinckney 48169. x341f

AR & TRUCK LEASING. For details see Lyle Christwell at Palmer Motor Sales, 475-1301. 491f

R. L. BAUER Builders

LICENSED AND INSURED Custom Building Houses - Garages Pole Barns Roofing - Siding Concrete Work

FREE ESTIMATES

Call 475-1218

NEED A ROOF? Call Toth Building & Remodeling, (313) 496-7919. 411f

WE US for transit mixed concrete. Klumpp Bros. Gravel Co. Chelsea 475-2530, 4920 Loveland Rd., Grass Lake, Mich. x401f

ROOMS by day, week or month. Excellent for the single man or three. Sylvan Hotel, Chelsea. Ph. 5-2811. x311f

KETO USED CARS \$200 GRAND - DEXTER 426-4535

CARS BOUGHT AND SOLD x381f

FIXED HAY for sale. Ph. 475-2010. x29

A fine selection of New and Used Cars for immediate delivery

Harper Pontiac Sales & Service 475-1306 Evenings, 475-1808 401f

REPAIR WORK - Inside or out. Mr. Coburn, 475-2893. 121f

GAR - NETT'S Flower & Gift Shop Your Friendly Florist 112 E. Middle St., Chelsea

PHONE 475-1400

Funeral Flowers Wedding Flowers Flowers (arranged or boxed) Potted Flowering Plants Green Plants - Corsages WE DELIVER x91f

STOM SEWING and alterations. After 2:30 p.m., 475-8745. 301f

ROOFING SPECIALIST - All types roof repairs, homes, barns, commercial. Insurance repairs. Asbestos shingles, not built-up roofing, slate tile-asbestos. Awnings porch enclosures. Call Joe for free estimates. Manchester, 428-5520. x221f

NTED - RN-LPN, full-time and part-time positions available. Training care facility. Call collect 751-7700 between 9 a.m. and 5 p.m., weekdays. x201f

WANT ADS

WEDDING STATIONERY - Prospective brides are invited to see our complete line of invitations and wedding accessories. The Chelsea Standard, 300 N. Main. Ph. 475-1371. 81f

McCulloch

Portable Generators

Chain Saws

WE SELL, SERVICE, SHARPEN AND TRADE

Chelsea Hardware

FOR REAL DOLLAR SAVINGS be sure and see us before you buy any new or used car. Palmer Motor Sales, Inc. Your Ford Dealer for over 60 years. x21f

DON'T THROW IT AWAY - Sell it to A&K Mower Service of Chelsea. We buy, sell and repair all types of lawn mowers. We also repair all types of small gas motors; rototillers, chain saws, riding lawn mowers. You call, we haul. Free pick up and delivery. 475-2923. x401f

EVANS JANITORIAL SERVICE has part-time positions available for the Chelsea area. Call 971-6263 after 6 p.m. x31f

Old Orchard

Furniture Refinishing

ANTIQUES RESTORED

Old finish removed from wood or metal safely and economically.

513 Old Orchard

Stockbridge, Michigan 49285

(517) 851-8713

EDWARDS CONSTRUCTION. Vinyl and aluminum siding, roofing, blown insulation, remodeling, building. Weston homes. Call Joe, 426-4057. x25

FITZSIMMONS

EXCAVATING

Sand - Gravel

BLACK DIRT

BASEMENTS - BULLDOZING SEPTIC TANKS - DRAIN FIELDS BACK HOE - TRUCKING

26 YEARS IN BUSINESS

IN CHELSEA AREA

Call "Bob" - 475-2010

BAZAAR & BAKE SALE - Friday, Dec. 3, 9 to 5; Saturday, Dec. 4, 9 to 1. By VFW Ladies Auxiliary, at Post Home, N. Main. Free Coffee. 24

UPHOLSTERING AND REPAIR - Free estimates. 10% off \$10 per yard materials or more. Ph. 475-9241. x241f

FOR SALE - 1970 Ford, 2-door. All new tires, good motor. Best offer over \$500. May be seen at 4540 Jackson Rd. x24

CLOCKS REPAIRED - Any antique, cuckoo, or grandfather clocks. Fred Petsch, 475-8494. x24

FOR SALE - H-14 good snow tires. Used one winter. \$25 for the pair. Ph. 475-2762. x51

FOR SALE - 1970 Torino 2-dr. hardtop. A real clean car with 351 Cleveland engine, air, automatic, power steering. Palmer Ford, 475-1301. x221f

HELP WANTED - RN or LPN, full-time and part-time positions available. Skilled nursing care facility. Call collect 517-551-7700 between 9 a.m. and 5 p.m. x121f

WANT ADS

FRISINGER

\$39,900 - Charming Early American home, 4 bedrooms, dining room, family room, 1 1/2 baths, immediate possession.

NEW LISTING - \$29,500. 3-bedroom remodeled home, dining room, new 1-car garage, full basement.

\$28,900 - 2-bedroom home, dining el, 1-car garage, Half Moon Lake area.

\$49,900 - 15 acres, 4 bedrooms, 1 1/2 baths, Stockbridge schools.

\$69,900 - 10 acres, 3-bedroom quality brick ranch, beautiful setting.

\$75,000 - 35 acres, 4-bedroom home, barn and outbuildings, Grass Lake schools.

VACANT LAND SYLVAN HILLS ESTATES - Beautiful wooded rolling sites, with underground electricity and telephone already in. Private blacktop roads, Chelsea schools. Prices start at \$15,500.

BUYERS CHOICE - 213 acres - Dexter-Chelsea Road. 10 acres - Forshee Lane. 30 acres - Tophitt Road. 71 acres - Riker Lake Road. 40 acres - Easton Road. 10 acres - S. Freer Road. 1 acre - Heim & Simpson Road. 40 acres - Fletcher Road. 5 & 10 acres - Orban Road. 10 acres - Hayes & Simpson Rd.

FRISINGER REALTORS Chelsea 475-8681

Eves: Herman Koenn 475-2613 Paul Frisinger 475-2621 Bob Koch 426-4754 x231f

We've Found a New Home MIKE'S SHIRT SHOP (former location - Old World Mall) Now located in Arborland Shopping Center Inside Fabric City

Huge selection of Tops, Cap Sleeve, Long Sleeve Tee Shirts and Dresses

Shirts start at \$3.50

Why not stop out for that perfect Christmas gift? x24

BRADFORD - AM-FM tuner with FM stereo 8-track and 2 speakers. \$55 or best offer. Ph. 475-8323. x24

APARTMENT TO SHARE - Female only, own room, \$118 per month plus utilities. Chelsea. Call 475-9671, persistently. x24

FOR SALE - 1971-72 Plymouth 318 engine, \$225, and trans. \$90. Low miles, warranty. Ph. 455-7108 or 459-0036. x24

FOR SALE - 1969-70 Pontiac 400 engine, \$225. Trans., \$85. Low miles, warranty. Ph. 455-7108 or 459-0036. x24

FOR SALE - 1970-72 Ford 390-429 engines \$250, trans., \$90. Low miles, warranty. Ph. 455-7108 or 459-0036. x24

FOR SALE - 1970 Dodge Monaco. Real clean, no rust. Automatic, power steering. Palmer Ford, 475-1301. x221f

FAMILY OF 5 relocating to Ann Arbor area needs 3-, 4-bedroom home or farmhouse to rent or buy on land contract. Need room for growing children. Write P. O. Box 473 Hancok, Mich. 49306. x29

FOR SALE - Ford LTD Landau demo. Near new condition. Save hundreds on this luxurious automobile. Palmer Ford, 475-1301. x231f

HELP WANTED - RN or LPN, full-time and part-time positions available. Skilled nursing care facility. Call collect 517-551-7700 between 9 a.m. and 5 p.m. x121f

WEBER HOMES

LOOKING FOR a building site in Chelsea or Dexter school district? We have many to choose from.

ALSO, will consider sales agreement on house under construction while you sell yours. Drive by 13360 North Territorial Road (near Hancok), \$47,900.

OLDER HOME in the village. (158 Park Street, Chelsea.) 3 bedrooms, 1 1/2 baths, dining room, TV room. \$34,900.

Call 475-2828 12290 Jackson Rd., Chelsea

Call 475-2828 12290 Jackson Rd., Chelsea

Call 475-2828 12290 Jackson Rd., Chelsea

Call 475-2828 12290 Jackson Rd., Chelsea

Call 475-2828 12290 Jackson Rd., Chelsea

Call 475-2828 12290 Jackson Rd., Chelsea

Call 475-2828 12290 Jackson Rd., Chelsea

Call 475-2828 12290 Jackson Rd., Chelsea

WANT ADS

SEAMLESS ALUMINUM eaves, troughs, roofing, siding, and carpentry work of all kinds. Experienced installers. All work guaranteed. For free estimate, call R. D. Kleinschmidt Co., 428-8838. x311f

TRAVEL TRAILERS - 13-ft. and up; 10x55 ft. trailers. John R. Jones Trailer Sales, Gregory, Mich. Phone 498-2755. x311f

FOR SALE by owner, business and living space, block building, 2 floors with office and apartment, zoned commercial, 134 ft. road frontage, over 1 acre. Call for appointment 475-9208. x121f

'71 BUICK LeSabre 4-dr., vinyl top, air, power steering, power brakes, good condition. \$1,150. Ph. 475-8312. x24

FOR SALE - Pr. K2 skis, 160 cm. long with Spadmen bindings. Only 1 year old. \$140. John Daniels, 475-1784. x25

FOR SALE - Two AKC registered Brittany Spaniel females, 4 1/2 mos. old, \$85 ea. Ph. 517-769-2237. x24

FOR SALE - 6.07 acres on private road, 4" well, drain field and septic tank, electricity in. Ph. 313-498-2813. x24

INDOOR ARENA boarding, lessons, training, English or Western. Ph. 426-8897. x28

INDOOR ARENA with complete care, box stall, grain, hay, bedding, horse wormed and hooves trimmed regularly. Monthly boarder shows and more, \$115 per month. 426-8897. x26

CUSTOM BUILDING

LICENSED & INSURED FREE ESTIMATES

TOTAL CONSTRUCTION SERVICES

-Homes, factories, warehouses -Pole buildings -Garages -Remodeling - Additions -Aluminum Siding -Roofing -Masonry Work, fireplaces, block work, patios, etc.

SLOCUM CONTRACTORS & BUILDERS

Serving Washtenaw County For Over 20 years 20700 OLD US-12 CHELSEA Phone 475-8321 or 475-7611. x21f

Beat High Fuel Costs With A Stove or Fireplace From Chelsea Lumber

ALMOST EVERYBODY'S DOING IT!

MAJESTIC-THULMAN Zero Clearance 36" fireplace \$290.25

SOLID CAST IRON PARLOR STOVE - 33" ht., 26 1/2 x 23 1/2 floor spread. Burns wood, charcoal, or coal. \$199.95

SOLID CAST IRON COMFORT HEATER - 52" ht., 24" diameter. Burns wood, charcoal or coal. \$199.95

26" SOLID CAST IRON BEN FRANKLIN STOVE - Includes grate, boot and damper, bar-b-que grill and spark guard \$189.95

"KING AUTOMATIC WOOD CIRCULATORS - Thermostat control, up to 12 hrs. continuous heating \$266.35

PACIFIC FIREPLACE GLASS DOOR and FIRESCREEN - 32x28 or 32x32 \$126.00 44x28 or 44x32 \$136.49 Available in satin black, ant. brass or polished brass.

CAST IRON FIREPLACE GRATES 24" \$22.50 27" \$24.00 30" \$25.75

"MAGIC HEAT" WASTE-HEAT CIRCULATOR - Installs in the stove pipe to triple the heating capacity of any stove \$69.95

ALL IN STOCK AT-

Chelsea Lumber Co. Ph. 475-1391

TRINKLE BLACK WALNUT MEATS for sale, \$3.50 per quart. Ph. 475-7557. x24

FARLEY CONSTRUCTION

522 HOWARD RD. ADDITIONS - REMODELING REPAIRS NEW HOMES 475-8265 or 475-7643

WANT ADS

BEEF - Locally corn fed. By quarter or side. Ready for your freezer. Ph. 426-4022 after 6 p.m. x401f

WANTED - Mature, live-in housekeeper for three elderly ladies in Ypsilanti. Room and board, minimum wages. Call 485-2049. x81f

ARE YOU BUILDING your own home? Construction money available for residential homes. Marflax Corp., Ann Arbor. 685-8000. x29

GIVE HAND-MADE GIFTS this Christmas. Agate necklaces, pins, bracelets, earrings, belt buckles, bolo ties and clocks. 292 Wilkinson St., Chelsea. Phone 475-8352. x23

LOST - 22 cal. pistol. South Lake area. Reward. Ph. 475-2785. x24

WANTED - Horses. Call (313) 449-2193. x25

Special of the Week 1976 BUICK CENTURY CUSTOM 4-DR. SEDAN Air Cond., 3,500 Miles \$4895

USED CARS 1974 Buick Estate Wagon, 2-seat, air cond., 33,000 miles. \$3495

1973 OLDS Cutlass S 2-dr. hardtop, air cond., 24,000 miles. \$3395

1973 FORD LTD 4-dr. hardtop, air cond. \$2295

1973 CHRYSLER Newport 4-dr. sedan, air cond. \$1995

1972 OLDS Custom Cruiser Wagon, 2-seat, air cond., 43,000 miles. \$2295

1972 OLDS Delta 88 4-dr. sedan, air cond., 45,000 miles. \$1995

We will be Closed Thru Sat., Nov. 29th Have a Pleasant Thanksgiving

SPRAGUE Buick-Olds-Opel, Inc. 1500 S. Main St., Chelsea Ph. 475-8964

HELP WANTED - Now taking applications for full and part-time sales clerks. Insurance, paid vacations and other benefits. Interested parties apply at 1767 Whittaker Rd., corner Huron River Dr., Ypsilanti, Mich. 27

FOR SALE - Shepherd and Collie puppies, 7 weeks old. Good stock dogs. Ph. 475-2967. x24

FOR SALE - Bunk beds, 2 refrigerators, 1 electric stove, 1 gas stove. Good condition. Ph. 475-8016. x24

WILL DO HOUSECLEANING for \$2.50 per hr. Also will babysit in your home or mine. Call 475-2673. x25

1970 FORD Camper Special with camper top, excellent condition. \$1,500. Ph. 475-8047. x51

FOR SALE - Jeep CJS 4-wheel drive. A real clean one/owner. Palmer Ford, 475-1301. x241f

AREA BUSINESS MAN seeks high-income oriented individual to help with family business. Ph. 475-7310. x26

Cards of Thanks CARD OF THANKS We, the family of Harold Greenwood wish to express our sincere thanks to our neighbors and friends, for the beautiful flowers, food, cards, calls and expressions of sympathy extended to us at the time of our bereavement. We wish to thank the Rev. LeRoy C. Johnson, Burghardt Funeral Home, Chelsea Community Hospital and staff, the ladies for the lunch, and the pallbearers. To all who helped in any way we are deeply grateful. Mrs. Harold Greenwood. Joe Greenwood and family. Jim Greenwood and family. Barbara Parker family. Veretta Whitaker family.

IN MEMORIAM In loving memory of Frank Reed who passed away Nov. 23, 1971. Some say time heals an aching heart but no it is not true, five long years have passed dear and our hearts still ache for you. Sometimes by your grave we wander, as we stand there alone, in our hearts there comes a longing, if only you could come home. You little thought when leaving home you would return no more, that you in death would so soon sleep and leave us here to mourn your loss. You left a beautiful memory, a story too great to be told, but to us who loved and lost you, your memory will never grow old. Sadly missed by Mrs. Frank Reed, Children and Grandchildren

MAUSOLEUMS * MONUMENTS BRONZE TABLETS * MARKERS

BECKER MEMORIALS 6033 Jackson Road ANN ARBOR, MICHIGAN

Freeway Motorists Get Weather Info

Lansing - Motorists traveling all interstate freeways in Michigan this winter may obtain up-to-the-minute weather information or their car radios as the result of a co-operative program involving the Michigan Association of Broadcasters, the State Police and the Department of State Highways and Transportation.

The Highways and Transportation Department has completed erection of 35 large blue and white signs headed by the legend: WEATHER INFO. Each sign will carry up to four frequencies of co-operating radio stations. Motorists may turn their car radio to one of the four frequencies and be assured of getting current weather information every 15 to 30 minutes during periods of severe weather.

State Police will feed information on driving conditions to radio stations involved in the new reporting service.

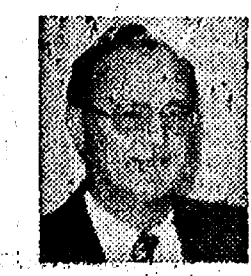
The service was inaugurated as a pilot program on three freeways last winter and has now been extended to all interstate freeways in Michigan. The Federal Highway Administration, which is encouraging freeway weather information signing, paid 90 percent of the cost.

The Michigan Association of Broadcasters emphasized that "this is a service to the public and not an advertisement for radio stations-hence, call letters will not be shown."

Most radio stations participating in the service operate 24 hours a day, seven days a week, and have transmitting strength to cover up to 70 miles of the particular freeway.

WEATHER INFO signs are now

DAVIDSON STATION
BEER BATTER FISH FRY
Every Friday Night 5 p.m. to 9 p.m.
 A friendly family tavern since Jan. 7, 1971.
113 S. MAIN CHELSEA
 Subscribe today to The Standard!



TODAY'S THOUGHT

By LOUIS BURGHARDT

Thanksgiving is a holiday we all take for granted. It has been a holiday for a long time and we can take it for granted that it will be celebrated many, many years hence.

There is a vast difference between taking things for granted - and taking things with gratitude. They are separate attitudes. It actually indicates a difference in people; those who take things for granted and those who take things with gratitude.

The Pilgrims in celebrating their first Thanksgiving could take nothing for granted. Their food, their shelter, their very lives could not be taken for granted. Every family among them, in just one year, lost one or more dear ones who were buried in a cemetery in a strange land, far from their homeland. In spite of their adversities they celebrated Thanksgiving - with gratitude to God. On this Thanksgiving, would it not be proper to ask ourselves whether we take too many things for granted - and too few things with gratitude? BURGHARDT FUNERAL HOME, 214 East Middle St., Chelsea, Mich. Phone 475-1551.

SPECIALS

9-OZ. BIRDSEYE Cool Whip 50c

10-OZ. PKG. ECKRICH Smoky-Links 83c

U. S. NO. 1 Potatoes 10 lbs. 59c

6-OZ. PKG. ASSORTED FLAVORS Jello-O 35c

HOPPY POP Popcorn . . . 2-lb. bag 39c

Thanksgiving Greetings to All!

KUSTERER'S

FOOD MARKET DIAL 475-2721 WE DELIVER

DAILY INTEREST

EFFECTIVE DECEMBER 1, 1976

The highest possible bank interest, 5% is paid on regular savings at Chelsea State Bank. Plus, the INTERESTED bankers pay this interest DAILY. That's right, 5% DAILY INTEREST at Chelsea State Bank.

CHELSEA STATE BANK

Attention Farm Owners

BICENTENNIAL SPECIAL for equipment storage, utility sheds, barns or warehouses. Middle pole building to suit your needs. Any size.

FREE ESTIMATES

SLOCUM CONTRACTORS & BUILDERS

Ph. 475-8321 or 475-7611

WEBER HOMES

LOOKING FOR a building site in Chelsea or Dexter school district? We have many to choose from.

ALSO, will consider sales agreement on house under construction while you sell yours. Drive by 13360 North Territorial Road (near Hanc



BOWLING NEWS



401; M. Adamson, 430; J. Norris, 518; L. Behnke, 468; Fran Thibault, 515.

Women, high game, 165 and over: F. Thibault, 208; L. Behnke, 172; J. Norris, 185; A. Alexander, 185; K. Haywood, 177; B. Torrice, 169; H. Karns, 179; O. Morley, 200; D. Alber, 171.

Rolling Pin	
W	L
Agg Beaters	31 17
olly Mops	31 17
Grinders	30 18
Beaters	29 19
Cookie Cutters	29 19
Enders	29 19
ugar Bowls	26 21 1/2
ish Rags	25 23
itchen Kapers	24 24
oachers	24 24
lkers	22 26
pooners	22 26
poradic Spatulas	21 27
elly Rollers	20 28
rooms	20 28
offee Cups	19 29
Pots	18 30
Moppper Uppers	10 38
500 and over series: D. Anderson, 535; J. Shepherd, 577.	
425 and over series: B. Wolfang, 430; D. Butler, 428; P. Borers, 435; P. Goins, 426; R. Dills, 438; D. Thompson, 451; R. Foster, 417; J. Edick, 445; P. Wurster, 417; C. Dmoch, 433; M. Kolander, 435; L. Volta, 445; P. Poertner, 417; W. Walz, 461; G. Clark, 454; P. Whitaker, 488; J. Stapish, 427; P. Harok, 443.	
150 and over games: B. Selwa, 53; S. Roehm, 154; B. Haist, 151; S. Scriven, 154; S. Severn, 157; B. Roberts, 155; J. Myers, 161; D. Uutter, 162; A. Granger, 150; H. inge, 165; W. Jackson, 175; E. Reynolds, 163; P. Bolders, 162; J. Parker, 150; P. Goins, 167; D. Anderson, 180, 183, 172; R. Dills, 69, 165, 154; D. Thompson, 201; J. Shepherd, 165; R. Foster, 207; J. Edick, 158; B. Stokess, 172; S. inge, 158; P. Wurster, 169, 158; C. Dmoch, 156; A. Classon, 158; M. Kolander, 181; L. Volta, 159; P. Poertner, 153, 203; M. Walz, 161; G. Clark, 191; E. Whitaker, 21; C. Schultz, 152; P. Harok, 53.	

Senior House League	
Standings as of Nov. 22	
W	L
S. J. Custom	62 15
Frank Grohs Chevrolet	52 25
Village Motors	52 25
Mark IV	48 29
Sylvan Center	48 31
Chelsea Lumber	48 32
Luke's	44 33
Wash. Crop Service	44 33
Chelsea Grinding	43 34
Schneider's Grocery	40 37
Bauer Builders	40 37
Dexter Automatics	34 43
Gambles	34 43
Dana	29 41
Seitz's	30 47
Wal's Barber Shop	22 55
Sarns, Inc.	21 58
Deansburro	0 70
600 series: P. Kelly, 609; J. Harok, 623; D. Buku, 600; M. Poertner, 611.	
325 series: J. Collins, 576; R. Lentz, 545; D. Weatherway, 574; L. Keezer, 542; M. Sweet, 571; J. Emmert, 538; A. Sannes, 555; W. Westphal, 572; L. Sanderson, 554; C. Stapish, 528; J. Grannis, 572; W. Sisco, 584; J. Eder, 543; O. Cavender, 546; P. Fletcher, 533; L. Bauer, 551.	
210 games: R. Herrst, 210; J. Fortner, 214; W. Sisco, 212; L. Sanderson, 212; P. Kelly, 237, 226; J. Emmert, 212; M. Sweet, 234; J. Harok, 238; J. Collins, 213; D. Buku, 213; M. Poertner, 246.	

Chelsea Suburban	
Standings as of Nov. 17	
W	L
Dairy Queen	54 30
Dancer's	51 33
Frisinger Realty	47 37
Waterloo Garage	45 39
Chelsea Assoc. Builders	44 40
Mark IV Lounge	42 42
State Farm	42 42
Ricardo's	42 42
Dana De-Lites	40 44
Chelsea Drug	39 45
Chelsea State Bank	32 52
Fletcher Mobil	26 58
150 games and over: D. McAllister, 230, 158; J. Buku, 184, 178; T. Monroe, 150, 175; S. Moore, 160; E. Miller, 155; M. Usher, 166, 157; N. Collins, 168, 146; S. Bowen, 168, 163, 154; P. Harok, 168, 171, 154; V. Stewart, 177, 150; D. Hawley, 169; A. Bohne, 170; J. Schulze, 179; D. Vargo, 155; F. Cole, 155, 158; K. Chapman, 155; V. Weber, 167; J. Huston, 155; G. DeSmith, 184; M. Neal, 165; B. Fike, 150; R. West, 158, 166; R. McGibney, 164, 160, 160; N. Prater, 155, 188; S. Hajner, 164, 155; G. Baczyński, 182, 160; S. Schulz, 159; S. Nickola, 160, 173; E. Neibauer, 151, 161, 156; E. Yocum, 163; A. Hocking, 177; D. Keezer, 161, 155; C. Peterson, 154; M. DeLaTorre, 182, 189; A. Foytik, 174; E. Figg, 151, 182.	
450 series and over: D. McAllister, 533; N. Collins, 494; P. Harok, 493; R. McGibney, 493; M. DeLaTorre, 491; J. Buku, 490; F. Cole, 460; J. Schulze, 451; S. Bowen, 485; V. Stewart, 465; N. Prater, 472; G. Baczyński, 457; M. Usher, 459; T. Monroe, 465; S. Schulz, 452; S. Nicola, 476; E. Neibauer, 468; A. Hocking, 455; D. Keezer, 465; E. Figg, 477.	

Nite Owl League	
W	L
Captains Table	53 24
Vahl Oil	51 26
C. C.	48 29
Flaming Pit	46 31
McCalla Feeds	46 32
en's Galss	44 32 1/2
orm's Body Shop	44 33
eele's Heating	42 34 1/2
Hanco Sports Center	40 37
is TV	40 37
FW	37 40
Chelsea Finance	37 41
Belser Construction	33 44
Mark V	31 46
ed's Standard	30 47
psi Farm Bureau	28 49
u-Yu Boutique	26 51
avanaugh Lake Store	26 51
200 games: Biggs, 207; B. Ervin, 23; B. Stacey, 212, 208; J. Bordars, 206, 215; O. Hansen, 202; C. Stapish, 200, 222; D. Nicewicz, 227; Headley, 209; T. Finch, 202; Buku, 224; L. McKinnon, 202; Wohlgenuth, 205, 208.	
600 series: B. Stacey, 601; G. Wohlgenuth, 603; C. Stapish, 602. 500 series: C. Biggs, 598; Harz, 549; B. Ervin, 589; J. orders, 591; O. Hansen, 521; P. ase, 513; R. Headley, 500; D. icewicz, 551; T. Finch, 544; E. uku, 591; M. Jedele, 519; M. ristle, 533; L. McKinnon, 504; Hammerschmidt, 524; T. Steele, 54.	

BUSINESSMEN'S LUNCHEON

Served from 11:30 to 1 Daily

MARK IV LOUNGE

PHONE 475-1951

1180 M-52 CHELSEA

FREE

FLORIDA CITRUS FRUIT

1/2 CASE OF FRESH PICKED FLORIDA CITRUS FRUIT
FREE WITH ANY ORDER OF \$25.00 OR MORE
Offer Good Through December 10th

See Us for All Your Printing Needs
Or Call 475-1389

INSTANT PRINTING

ENVELOPES ANNOUNCEMENTS
LETTERHEADS WEDDING INVITATIONS
BUSINESS CARDS SOCIAL STATIONERY
FORMS BROCHURES

THE PRINT SHOP

DICK HARVEY
405 N. MAIN ST., CHELSEA, MICHIGAN

"Where Service Equals Your Need"

Peppermint Patties	
Standings as of Nov. 20	
W	L
Red Barons	18 9
Cool Cats	13 14
Super Strikers	12 15
Hot Shots	11 16
Games 70 and over: J. Keezer, 74; L. Keezer, 72, 71; C. Hegadorn, 83, 99; T. Harok, 98, 87; C. Alexander, 86, 77; K. Roberts, 84; D. Alexander, 95; C. Schulze, 78, 123.	
Series 100 and over: E. Zink, 112; M. Monroe, 116; J. Keezer, 113; L. Keezer, 143; C. Hegadorn, 192; T. Harok, 185; C. Alexander, 183; K. Roberts, 143; D. Alexander, 147; C. Schulze, 201; T. Anderson, 117.	

Junior House League	
Standings as of Nov. 18	
W	L
Ypsi Asphalt	54 30
Mac Tools	53 31
Village Books	50 34
Stocum Construction	50 34
Washtenaw Engineering	49 35
Perfect Fit Seat Covers	48 36
Smith's Service	47 37
D. D. Deburring	46 38
3-D Sales & Service	46 38
Ann Arbor Kirby	45 39
Mark IV Lounge	40 44
Boyer Automotive	39 45
Mini Livestock Exch.	37 47
Hanco Sports	37 47
Rockwell International	35 49
Chelsea Lanes	33 51
Stivers	26 58
Robert's Paint & Body	21 63
600 series: R. Lentz, 632; D. Clark, 608.	
525 or over: P. Kelly, 588; A. Sannes, 545; T. Dittmar, 589; G. Beeman, 589; S. Cavender, 550; M. McAllister, 561; L. Fahrner, 539; J. Harok, 597; D. Buku, 557; M. Poertner, 541; L. Marshall, 564; K. Vassak, 588; R. Zatorski, 542; R. Schenk, 564; T. Eisele, 531; P. Case, 546; D. White, 572; F. Northrop, 542; E. Greenleaf, 552; E. Vassak, 561; A. Felschmann, 537.	
210 or over: P. Kelly, 238; A. Sannes, 224; T. Dittmar, 233; G. Beeman, 214; R. Lentz, 220, 216; D. Clark, 219; J. Harok, 224; R. Zatorski, 235; D. White, 210; E. Vassak, 211; L. Bauer, 213; A. Felschmann, 216.	

Chelsea Lanes Mixed	
Standings as of Nov. 19	
W	L
Federal Screw Outlaws	52 25
Spare Makers	51 26
Torrice & Karns	48 29
Mark IV Lounge	45 32
Hook, Line & Stinkers	45 32
Bollinger's Sanitation	44 33
Buckeye Transplants	43 34
A & K	40 37
Cook's Plumbing	39 38
Easy Rollers	37 40
Doug's Painting	36 41
Bable & Morley	34 43
Ann Arbor Centerless	33 44
Go-Getters	32 45
P.S.	29 41
Floyd's Gang	23 54
Ann Arbor Federal S & C 22	21 56
Routabouts	18 31
Men's high series, 475 and over: D. Booth, 496; T. Bopp, 574; G. Popp, 508; D. Williams, 518; G. Rouse, 503; D. Alexander, 556; W. Steinaway, 479; J. Torrice, 550; T. Karns, 479; M. Jones, 510; L. Bell, 493; A. Dills, 503; A. Sannes, 582; K. Vassak, 520.	
Women's high series, 425 and over: R. Dills, 431; D. Alber, 482; O. Morley, 441; T. Steinaway, 427; B. Torrice, 469; H. Karns, 447; A. Alexander, 436; K. Haywood, 430.	

Charlie Brown & Snoopy Peanut League	
Standings as of Nov. 20	
W	L
Dana Chargers	21 6
Bowling Bulldogs	18 9
Bullpups	18 9
Jaws	14 13
Fonzie's Friends	11 16
Bronco Bowlers	2 25
Games 70 and over: K. Fletcher, 95, 89; D. Waldyke, 96, 84; C. Baker, 71, 80; H. Morrell, 107, 103; D. Collins, 105, 99; P. Fletcher, 102, 97; D. Detting, 116, 143; J. Waldyke, 84, 82; J. Tobin, 89, 103; D. Thompson, 150, 100; B. Robeson, 134, 83; C. Bollinger, 82, 113; M. Stebeleton, 73.	
Series 100 and over: K. Fletcher, 184; D. Waldyke, 180; C. Baker, 151; David Cox, 117; H. Morrell, 119; D. Collins, 204; P. Fletcher, 200; D. Detting, 259; C. Baker, 116; B. Robeson, 217; C. Bollinger, 195; M. Stebeleton, 136; Debbie Cox, 126; J. Boyer, 108; J. Waldyke, 166; D. Buku, 121; S. Carpenter, 107; J. Tobin, 192; K. Kleis, 132; D. Thompson, 250.	

Leisure Time League	
Standings as of Nov. 18	
W	L
Misfits	26 1/2 17 1/2
Unpredictables	25 19
Four Stooges	25 19
Sugar Loafers	25 19
Day Dreamers	25 19
Lady Bugs	23 21
Crackpots	22 22
Afternoon Delights	21 23
Holy Rollers	20 24
Roadrunners	18 26
Slowpokes	17 1/2 26 1/2
The Lakers	16 28
500 series: S. Bowen, 532; D. Dault, 506.	
200 games: S. Bowen, 200. 400 series: S. Brown, 451; B. Marsh, 408; D. Messing, 456; P. Whitesall, 403; K. Herman, 423; E. Williams, 434; R. Musbach, 425; A. Rivord, 410; J. Barkley, 400; D. Thompson, 434; S. Friday, 430; K. Haywood, 468; G. Wheaton, 415; R. Forner, 415; E. Heller, 427; M. O'Donnell, 422; S. Weston, 488; C. Hoffman, 469; S. Weber, 403; B. Tison, 427; J. Delagrange, 414; C. Engler, 427.	
Games 140 and over: S. Brown, 164, 153; M. Schauer, 141; M. R.	

Junior Swingers	
Standings as of Nov. 20	
W	L
Boone's Farm Five	39 9
Cool Company	35 13
Wileisrowmly	28 20
SWAT	28 20
The Wild Bunch	27 21
Team No. 6	27 21
The Bowling Wizards	26 22
The Striking Five	22 26
Unbeatables	18 30
Crazy Five	15 33
The Rookies	14 34
Team No. 12	11 37
Girls, high games: D. Steinaway, 172, 165; T. Alexander, 170, 146; R. Alexander, 158; S. Miller, 154, 150; M. Northrop, 148; C. Collins, 146.	
Girls, high series: D. Steinaway, 471; S. Miller, 444; T. Alexander, 431; M. Northrop, 397; R. Alexander, 388.	
Boys, high games: S. Hegadorn, 201; C. Sannes, 196, 189; J. Push, 190, 169; D. McGill, 183; C. Tobin, 181; J. Fouty, 179, 179.	
Boys, high series: C. Sannes, 552; J. Push, 519; J. Fouty, 518; B. Freeman, 483; D. Thompson, 460.	

Charlie Brown Prep	
Standings as of Nov. 20	
W	L
Pin Crackers	29 4
Alley Runners	23 10
Super Pros	20 13
Pin Dusters	16 16 1/2
Pinball Wizards	12 12 1/2
Pin Pirates	12 21 1/2
Team No. 8	10 23
Team No. 2	9 24
Girls, high games: L. Mepyns, 139, 111; S. Messner, 134; A. Ziegler, A. Aello, 127; T. Fletcher, 114, 11; B. Behnke, 101.	
Boys, high games: G. Greenleaf, 167, 145; J. Rowe, 157, 138; T. Greenleaf, 151; D. Kleis, 138; M. Selwa, 125; A. Fletcher, 125.	

Tri-City Mixed	
Standings as of Nov. 19	
W	L
Stivers	57 27
E. P. Smith Pallet Co.	48 36
Baker & Fletcher	48 36
Portage Hardware	48 36
Central Fibre	48 36
Chelsea Cleaners	47 37
Iverson's Inn	47 37
T-Square Enterprises	45 39
Gambles	43 41
Triangle Sales	42 42
Fitzpatrick Realtor	40 44
Lloyd Bridges Chevrolet	39 45
Mel's Rounding	38 46
The Proud Americans	36 48
TNT	36 48
D-Sales & Service	33 51
Owen's Waterloo Store	31 53
Coachmen Four	29 55
500 series, men: J. Baker, 529; E. Buku, 510; G. Burnett, 505; S. Cavender, 593; F. Cooper, 515; C. Ewers, 527; P. Fletcher, 533; J. Ritchie, 502; T. Schulze, 519; D. Scott, 521; M. Smith, 562.	
200 games, men: E. Buku, 206; S. Cavender, 209; F. Cooper, 201; C. Ewers, 204; M. Smith, 214.	
450 series, women: M. Ashmore, 496; G. Detting, 487; B. Fike, 455; E. Hoover, 475; M. Myers, 463; B. Parish, 463; P. Sober, 450; C. Stoffer, 480; M. Westcott, 609.	
150 games, women: M. Ashmore, 166, 172, 155; V. Bable, 168; K. Barksdale, 170; G. Cooper, 169; G. Detting, 178, 155.	

Unknowns League	
Standings as of Nov. 17	
W	L
Pin Dusters	50 25
Shady Ladies	52 39
Independents	44 47
Strikers	44 47
Streakers	40 51
Fascinating '55	37 54
Games of 140 and over: D.	

The Chelsea Standard, Thursday, November 25, 1976 11

Motor Fuel Use In Michigan Headed For New Record

Lansing—Motor fuel consumption in Michigan is expected to reach a record 5.062 billion gallons in 1976, the Department of State Highways and Transportation reports.

The total would be a 4.8 percent increase over 1975 but only 1.1 percent higher than the previous record set in 1973, the year the Arab oil embargo began.

Nationally, the U. S. Department of Transportation estimates that motor fuel consumption will be 118.8 billion gallons, a 5.5 percent increase over 1975 and 3.8 percent higher than 1973.

Michigan again ranks seventh in motor fuel consumption, behind California with 11.4 billion gallons, Texas, New York, Ohio, Illinois and Pennsylvania, in that order.

An 820-bed replacement Veterans Administration hospital is scheduled for completion in Los Angeles this month.

Shorter days mean greater use of electric lights. The Federal Energy Administration suggests that consumers guard against higher electricity costs by burning only essential lights. Remind youngsters to turn off the lights when they're the last to leave a room. And remember to do the same yourself.

Subscribe today to The Standard!

Observe Thanksgiving With Gratitude

Time for Festive Joy... and Gratitude

In this land of plenty, we have so much to be grateful for at Thanksgiving... from the abundance of the festive board to our boundless opportunities, our many freedoms. Let us all give thanks for our bounty.

OPEN AT 2 P.M. ON THANKSGIVING DAY

CHELSEA LANES

1180 M-52 Phone GR 5-8141

PLYMOUTH VOLARE

4-DOOR WAGON.

BIG ON ROOM... SMALL IN PRICE.

\$3941*

AMERICA'S NO.1 SELLING WAGON

There are a lot of reasons Volare Wagon is so big these days. First there's the room. It has more cargo room than any other compact wagon built in America. Volare even has 85% the load capacity of the average of mid-size wagons.

And speaking of additional room, you'll appreciate Volare's locking optional interior side storage bins. They handle some of the extra gear you never seem to have room for.

24 MPG HWY 17 MPG CITY
EPA estimates †

Secondly, Volare Wagon is economical. It got 24 mpg on the highway, 17 in the city with its 225 six 2-bbl. engine and manual transmission. And to top it all off, Volare Wagon has the best resale value in its class.†

Wrap all that room and economy together with Volare's nice price, and you've got yourself quite a deal. Stop in and see Volare Wagon soon.

AUTHORIZED DEALER PAA

*Manufacturer's suggested retail price excluding taxes, destination charges, and optional wheelwells (\$39.25) and body side moldings (\$39.40).

†Your actual mileage may differ depending on how and where you drive, the condition of your car and its optional equipment.

‡Volare returned a greater percentage of original sticker price based on Automotive Market Report averages, 10-18-76, for comparably equipped cars.

SEE YOUR CHRYSLER-PLYMOUTH DEALER

VILLAGE MOTOR SALES, INC.

1185 MANCHESTER ROAD
CHELSEA, MICHIGAN

DAVIDSON STATION

EUCHRE NIGHT EVERY TUESDAY
7:30 p.m. to 9:30 p.m.

A friendly family tavern since Jan. 7, 1871.

Our 1st YEAR *Anniversary Sale*

Our Way of Thanking You for Making Our First Year Successful A BIG SALE—FRI. & SAT. NOV. 26-27

STORE HOURS DURING SALE: 8 a.m. to 8 p.m.

If sale items should be sold out, a rain check will be issued. Must be paid for in advance.

FOR THE LADIES

Some excellent buys for your hubby's Christmas.

WINDSHIELD WASHER - SOLVENT

79^c gal. (Limit: 4 gal.)

VALVOLINE OIL

10W-40 NO. 141

59^c qt.

\$14.00 per case - Limit 2 cases.

FOOTE TRAILER HITCHES

Class I and II

25% Off Retail Price

BERNZAMATIC HOME WELDING KIT

"Mom! It's for the man who likes to tinker around the house or shop."

Reg. \$39.95 **\$35⁹⁵**
NOW ONLY

WONCH SNOWMOBILE BATTERIES

Quality at a Reasonable Price!

Only \$21.95

R & N BATTERY CHARGERS

6 and 12 Volt Charger REG. \$24.95
6 Amp. rate. **Only \$19.95**
Model 66

6 and 12 Volt Charger REG. \$37.50
12 Amp. rate. **Only \$31.95**
Automatic control.
Model 126AC

DRIVE-UP RAMPS

3-ton capacity. Reg. \$29.95

ONLY \$22.95

FREE DOOR PRIZES

Stop in and Register - No Purchase Necessary.

- | | |
|--------------------------------------|--------------------------------|
| 1st—Set of Gabriel Hi-Jackers | 5th—Black & Decker Jig Saw |
| 2nd—Rockwell Edge Trimmer | 6th—Digital Watch |
| 3rd—3-Year 12-Volt Wonch Car Battery | 7th—Socket Set |
| 4th—Nasa 14-pc. Wrench Set | 8th—Complete Set of Floor Mats |
| | 9th—Racing Jacket |

DRAWING TO BE HELD NOV. 27 at 7:30 p.m.

JELLY BEAN GUESS

Whoever comes the closest to guessing how many Jelly Beans are in the jar will win

**4 GABRIEL ROAD STARS SHOCK ABSORBERS
FOR YOUR CAR - LIFETIME GUARANTEE**

AVIEX STARTING FLUID

Only 89c per can

(Limit 6)

KAR INDUCTION TIMING LIGHT

Reg. \$37.00 **\$29.95**
Now Only

KAR TACH & DWELL METER

Reg. \$21.95 **\$15.95**
Now Only

KAR COMPRESSION TESTER

Reg. \$16.99 **\$12.95**
Now Only

LASTIK GAS LINE ANTI-FREEZE

Only 49c per can

(Limit 6)

IRWIN 7-PC. SCREWDRIVER SET

Only \$4.95
Lifetime Warranty

All-Purpose Tool Box

No. PL 19 **Only \$5.99**
Reg. \$9.95

WELLER SOLDERING KIT

Reg. \$19.99 **\$13.95**
Now Only

HEIN-WARNER HYDRAULIC JACKS

3-Ton Capacity. Reg. \$48.35 NOW **\$28⁸⁸**

5-Ton Capacity. Reg. \$58.80. NOW **\$34⁹⁹**

8-Ton Capacity. Reg. \$69.75. NOW **\$39⁹⁹**

TOOL RENTAL PROGRAM

You can now rent a puller or torque wrench at a reasonable cost.
Many other misc. items also for rent.

HEAVY DUTY JUMPER CABLES Only \$5.99

KATS ENGINE HEATERS

1000 WATT - Reg. \$22.38. Only **\$13⁹⁵**

1500 WATT - Reg. \$27.10. Only **\$16⁹⁵**

SUPERIOR STEERING WHEEL COVER Reg. \$6.99 **\$3.99** Now Only

S-K TORQUE WRENCHES

50 ft. lbs. . . . Only \$10.88

100 ft. lbs. . . . Only \$11.88

150 ft. lbs. . . . Only \$12.88

200 ft. lbs. . . . Only \$14.88

HUFFY SNOWMOBILE GAS MIXING CANS

6 1/2-Gal. Capacity

Only \$8.95

HAND SPOTLIGHT Only \$9.99

TRW REAR WINDOW DEFOGGER

Reg. \$15.95 **\$10⁹⁵**
Now Only

Rockwell Electric Drills

3/8" Reversible and Variable Speed

Only \$24.95

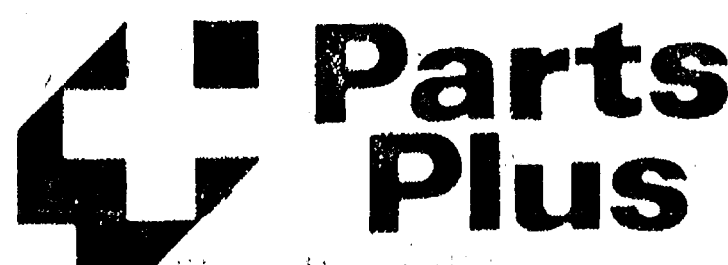
1/4" Variable Speed

Only \$19.95

CHELSEA AUTOMOTIVE

1414 S. MAIN ST., CHELSEA

PHONE 475-9106



STORE HOURS DURING SALE

8 a.m. to 8 p.m.